

2024/25



# ALPINE RACE



ENGLISH





# PRO CENTER

## THE ULTIMATE SHOP FOR RACERS



### ATOMIC PRO CENTERS

Atomic Pro Centers are our competence centers created exclusively for FIS members and race enthusiasts, from junior racers to World Cup competitors. You'll quickly discover it's not just the gear that makes these places special. Our experienced alpine race technicians will work with you to find the perfect ski set-up.

Our main Atomic Pro Center is located at the Atomic global headquarters in Altenmarkt, on the same site as our ski production and R&D facilities. Besides, there is also an Atomic Pro Center at SNO in Oslo and over 30 Atomic Pro Center Partners worldwide.

### RACING SERVICES

Experts with World Cup experience will share our top-end racing equipment with you and build your own individual set-up. It enables racers on the way up to experience the unique service enjoyed by our top Atomic stars – from having their skis tuned in our Race Department with Wintersteiger equipment to having their boots professional fitted by our Atomic race technicians.



### APPOINTMENT

Racing services are available in Altenmarkt and Oslo, and any of our Pro Center partners in your region. To make sure we have enough time for individual service, please book an appointment in advance.

Please find our Atomic Pro Center and Pro Center Partners listed on the back page of the catalog.



NIELS HINTERMANN



SOFIA GOGGIA



ANDREAS SANDER



ALEKSANDER AAMODT KILDE



FLORIAN SCHIEDER



JOANA HÄHLEN



MANUEL FELLER



ALEX VINATZER

# HOW WELL DO YOU KNOW OUR ATHLETES?



MIKAELA SHIFFRIN

ANSWERS: 1. Aleksander Aamodt Kilde 2. Mikaela Shiffrin 3. Aleksander Aamodt 4. Sofia Goggia 5. Manuel Feller 6. Florian Schieder 7. Mikaela Shiffrin 8. Joana Hählen 9. Sofia Goggia 10. Nils Hintermann 11. Andreas Sander 12. Sofia Goggia 13. Aleksander Aamodt Kilde 14. Alex Vinatzer

### GUESS WHO SAID WHAT!

- 1 My best buddy in the World Cup is Adrian Sejersted.
- 2 I listen to Taylor Swift before the races.
- 3 My favorite Austrian word is "Gewaltig."
- 4 My favorite chairlift buddy is Babi (my serviceman).
- 5 My lucky charm is the teddy bear I got from my son.
- 6 My most used emoji is the thumbs-up.
- 7 My favorite Austrian word is "Ausgezeichnet."
- 8 My favorite candy is chocolate.
- 9 My most used emoji is the burning heart.
- 10 I am talent-free except for skiing.
- 11 I bring my own pillow to every World Cup stage.
- 12 Mark Zuckerberg is the most famous person in my contact list.
- 13 My favorite World Cup stage is Beaver Creek.
- 14 Sofia Goggia is the most famous person in my contact list.

# JUNIORS TO CHAMPIONS

ONCE A JUNIOR,  
FOREVER A CHAMPION

# JTC

Supporting young, up-and-coming athletes with high-quality equipment, as well as tuning and boot fitting, has always been a top priority for Atomic. But now we're taking junior development to the next level with "Juniors To Champions", our new exclusive coaching program.

More than 60 years of experience in racing, combined with our close relationship with world-class athletes, means we know that it takes to become a professional skier: physical conditioning, mental strength, regeneration, nutrition, the perfect skis, boots, and goggles – not to forget the skills to tune those perfectly to any snow conditions.

With Juniors To Champions – or JTC – we'll support our aspiring young athletes from U12 to U18 in all these aspects of ski racing by providing access to our network of World Cup-tested experts. And prepare them for the rigorous demands of professional sports.

## Sounds promising, right?

So, how do we do it? Well, our target group are digital natives, so what better way to reach them than through their electronic devices?

Broadcast directly from the Atomic office, we host monthly online calls with all our juniors dealing with questions like how to stay focused on a race day, how to warm up properly, and how to store your skis over summer. What begins with boys and girls sitting individually in front of their devices quickly turned into JTC watch parties where everyone gets together in front of one phone or laptop. The ultimate aim is to build a deep sense of community among junior racers.

## Getting the JTC spirit on snow

While expanding knowledge at such a young age is great, racers want to race – and a coaching program wouldn't be complete without training sessions on the white, cold gold we all love. But we want JTC to be unique and different and

ordinary "Let's all get better" camps won't cut it. Instead, we want our juniors to truly get used to skiing at speed, all while testing new skis and lengths.

The big advantage of getting these proteges on snow is that we can involve them in prototype tests and get feedback straight away. This enables us to react quickly and effectively. The new ICON binding is just one of many chapters of this story.

Through all these initiatives, we bring our juniors one step closer to success, both on and off the race course. And from time to time, we we'll reward outstanding performances with exclusive access to World Cup races, including hallowed access to the treasury of success – the wax cabins of our service crew.



## The Red(ster) line in a skier's career

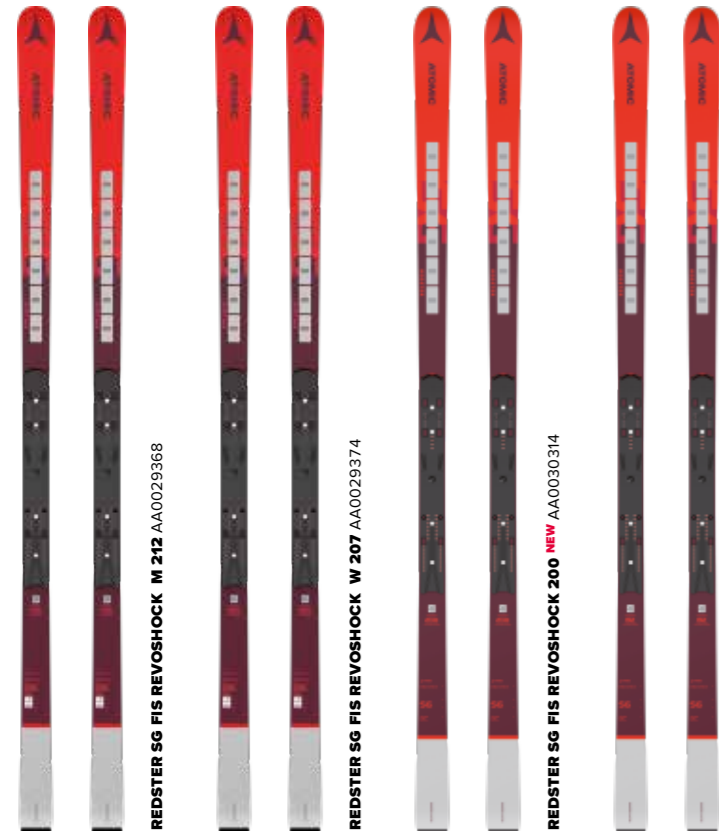
With JTC, we want to make Redster a name that racers can rely on from U12 right up to World Cup level. Over the course of a career, coaches and teams may change. But once you've skied on a Redster, we do our best to make sure that it's with you all the way.

Last but not least, JTC will also add a whole new dynamic to our Atomic Pro Centers and Pro Center Partners, which have been serving as competence centers for equipment and racing service for many years.

All in all, this makes Atomic's commitment to junior racing pretty darned unique.

# SKIS TECHNICAL SPECIFICATIONS

SG



G9



S9

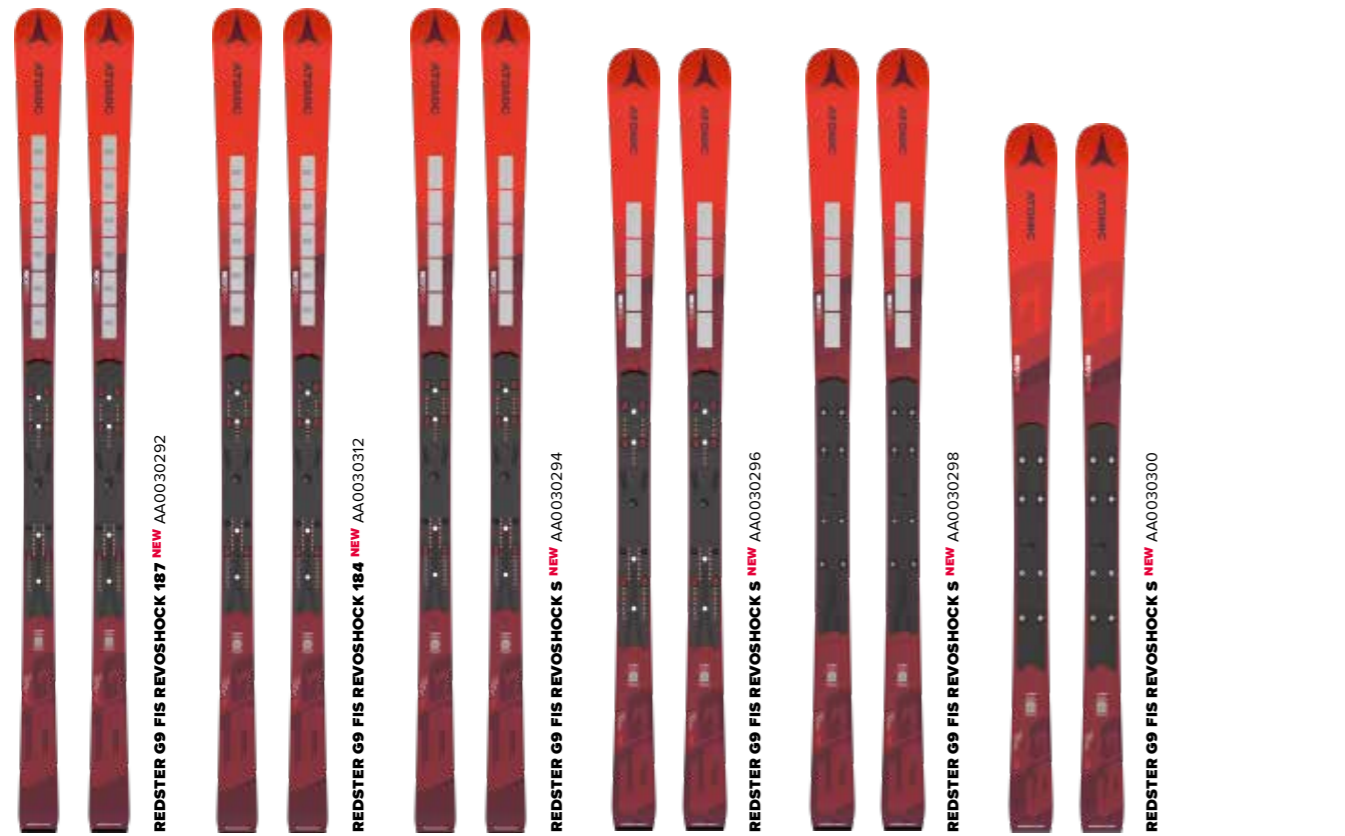


PRODUCT	ART. NO.	BINDINGS	LENGTH (cm)	RADIUS (m)	SIDE CUT TIP (mm)	SIDE CUT WAIST (mm)	SIDE CUT TAIL (mm)	FEATURES	PRICES
<b>REDSTER SG FIS REVOSHOCK M 212</b>	AA0029368	-	212	45	95	65	81	Revoshock, Ultra Power Woodcore, Ultra TI Powered, Full Sidewall, Structured Topsheet, Side Edge Angle: 87°, Base Edge Angle: 1.0°, World Cup Base Finish, Icon Interface	
<b>REDSTER SG FIS REVOSHOCK W 207</b>	AA0029374	-	207	40	95	65	81.2	Revoshock, Ultra Power Woodcore, Ultra TI Powered, Full Sidewall, Structured Topsheet, Side Edge Angle: 87°, Base Edge Angle: 1.0°, World Cup Base Finish, Icon Interface	
<b>REDSTER SG FIS REVOSHOCK 200</b>	AA0030314	-	200	35	96.5	65	81.1	Revoshock, Ultra Power Woodcore, Ultra TI Powered, Full Sidewall, Structured Topsheet, Side Edge Angle: 87°, Base Edge Angle: 1.0°, World Cup Base Finish, Icon Interface	
<b>REDSTER SG FIS REVOSHOCK</b>	AA0030316	-	185 192	30 35	98.5 98	65	82 82.4	Revoshock, Ultra Power Woodcore, Ultra TI Powered, Full Sidewall, Structured Topsheet, Side Edge Angle: 87°, Base Edge Angle: 1.0°, World Cup Base Finish, Icon Interface	
<b>REDSTER G9 FIS REVOSHOCK M 193</b>	AA0030286	-	193	30	101.5	65	83.8	Revoshock, Ultra Power Woodcore, Ultra TI Powered, Full Sidewall, Structured Topsheet, Side Edge Angle: 87°, Base Edge Angle: 0.5°, World Cup Base Finish, Icon Interface	
<b>REDSTER G9 FIS REVOSHOCK W 188</b>	AA0030288	-	188	30	97.6	65	83.5	Revoshock, Ultra Power Woodcore, Ultra TI Powered, Full Sidewall, Structured Topsheet, Side Edge Angle: 87°, Base Edge Angle: 0.5°, World Cup Base Finish, Icon Interface	
<b>REDSTER G9 FIS REVOSHOCK W 183</b>	AA0030290	-	183	30	100	65	80.5	Revoshock, Ultra Power Woodcore, Ultra TI Powered, Full Sidewall, Structured Topsheet, Side Edge Angle: 87°, Base Edge Angle: 0.5°, World Cup Base Finish, Icon Interface	

PRODUCT	ART. NO.	BINDINGS	LENGTH (cm)	RADIUS (m)	SIDE CUT TIP (mm)	SIDE CUT WAIST (mm)	SIDE CUT TAIL (mm)	FEATURES	PRICES
<b>REDSTER G9 RS REVOSHOCK 190</b>	AA0030280	-	190	27.5	104	68	89	Revoshock, Ultra Power Woodcore, Ultra TI Powered, Full Sidewall, Structured Topsheet, Side Edge Angle: 87°, Base Edge Angle: 0.8°, World Cup Base Finish, Icon Interface	
<b>REDSTER G9 RS REVOSHOCK 183</b>	AA0030282	-	183	24	105	67.5	89	Revoshock, Ultra Power Woodcore, Ultra TI Powered, Full Sidewall, Structured Topsheet, Side Edge Angle: 87°, Base Edge Angle: 0.5°, World Cup Base Finish, Icon Interface	
<b>REDSTER G9 RS REVOSHOCK 176</b>	AA0030284	-	176	21	106.5	67	90	Revoshock, Ultra Power Woodcore, Ultra TI Powered, Full Sidewall, Structured Topsheet, Side Edge Angle: 87°, Base Edge Angle: 0.5°, World Cup Base Finish, Icon Interface	
<b>REDSTER S9 FIS M 165</b>	AA0030308	-	165	12.1	119	66.1	103.5	Ultra Power Woodcore, Ultra TI Powered, Full Sidewall, Structured Topsheet, Side Edge Angle: 87°, Base Edge Angle: 0.5°, World Cup Base Finish, Icon Interface	
<b>REDSTER S9 FIS W 157</b>	AA0030324	-	157	12.7	114.5	66.3	99.5	Ultra Power Woodcore, Ultra TI Powered, Full Sidewall, Structured Topsheet, Side Edge Angle: 87°, Base Edge Angle: 0.5°, World Cup Base Finish, Icon Interface	
<b>REDSTER S9 FIS 155</b>	AA0030310	-	155	12.1	112.9	65	97.5	Ultra Power Woodcore, Ultra TI Powered, Full Sidewall, Structured Topsheet, Side Edge Angle: 87°, Base Edge Angle: 0.5°, World Cup Base Finish, Icon Interface	
<b>REDSTER S9 FIS 152</b>	AA0030302	-	152	11.6	115.5	65	96.5	Ultra Power Woodcore, Ultra TI Powered, Dura Cap Sidewall, Structured Topsheet, Side Edge Angle: 87°, Base Edge Angle: 0.8°, World Cup Base Finish, Icon Interface	

# SKIS TECHNICAL SPECIFICATIONS

## JR GS



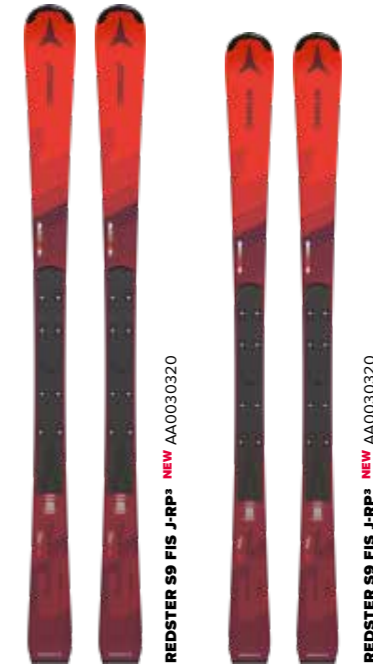
PRODUCT	ART. NO.	BINDINGS	LENGTH (cm)	RADIUS (m)	SIDE CUT TIP (mm)	SIDE CUT WAIST (mm)	SIDE CUT TAIL (mm)	FEATURES	PRICES
<b>REDSTER G9 FIS REVOSHOCK 187</b>	AA0030292	-	187	26	103	65	82.4	Revoshock, Ultra Power Woodcore, Ultra TI Powered, Full Sidewall, Structured Topsheet, Side Edge Angle: 87°, Base Edge Angle: 0.8°, World Cup Base Finish, Icon Interface	
<b>REDSTER G9 FIS REVOSHOCK 184</b>	AA0030312	-	184	25	104.3	65	85.4	Revoshock, Ultra Power Woodcore, Ultra TI Powered, Full Sidewall, Structured Topsheet, Side Edge Angle: 87°, Base Edge Angle: 0.8°, World Cup Base Finish, Icon Interface	
<b>REDSTER G9 FIS REVOSHOCK S</b>	AA0030294	-	173 180	20 24	105 104	65 65	87.5 85.5	Revoshock S, Ultra Power Woodcore, Ultra TI Powered, Full Sidewall, Structured Topsheet, Side Edge Angle: 87°, Base Edge Angle: 0.8°, World Cup Base Finish, Icon Interface	
<b>REDSTER G9 FIS REVOSHOCK S</b>	AA0030296	-	159 166	17.3 18.1	104.5 106	65 65	86.5 88	Revoshock S, Power Woodcore, Ultra TI Powered, Dura Cap Sidewall, Structured Topsheet, Side Edge Angle: 87°, Base Edge Angle: 0.8°, World Cup Base Finish, Icon Interface	
<b>REDSTER G9 FIS REVOSHOCK S J-RP3</b>	AA0030298 AAST02224 AAST02226 AAST02230 AAST02228	- ICON 12 ICON 10 COLT 7 GW C COLT 7 GW CA	152 159 166	17 7.3 8.1	102.5 104.5 106	65 65 65	84.5 86.5 88	Revoshock S, Power Woodcore, Ultra TI Powered, Dura Cap Sidewall, Structured Topsheet, Side Edge Angle: 87°, Base Edge Angle: 0.8°, World Cup Base Finish, Junior Race Interface	
<b>REDSTER G9 FIS J-RP3</b>	AA0030300 AAST0a2232 AAST02234 AAST02236	- ICON 10 COLT 7 GW C COLT 7 GW CA	124 131 138 145	13.5 14 14.5 15	96 98 100 102	65 65 65 65	79 81 83 85	Power Woodcore, Ultra TI Powered, Dura Cap Sidewall, Structured Topsheet, Side Edge Angle: 87°, Base Edge Angle: 0.8°, World Cup Base Finish, Junior Race Interface	

## JR SL

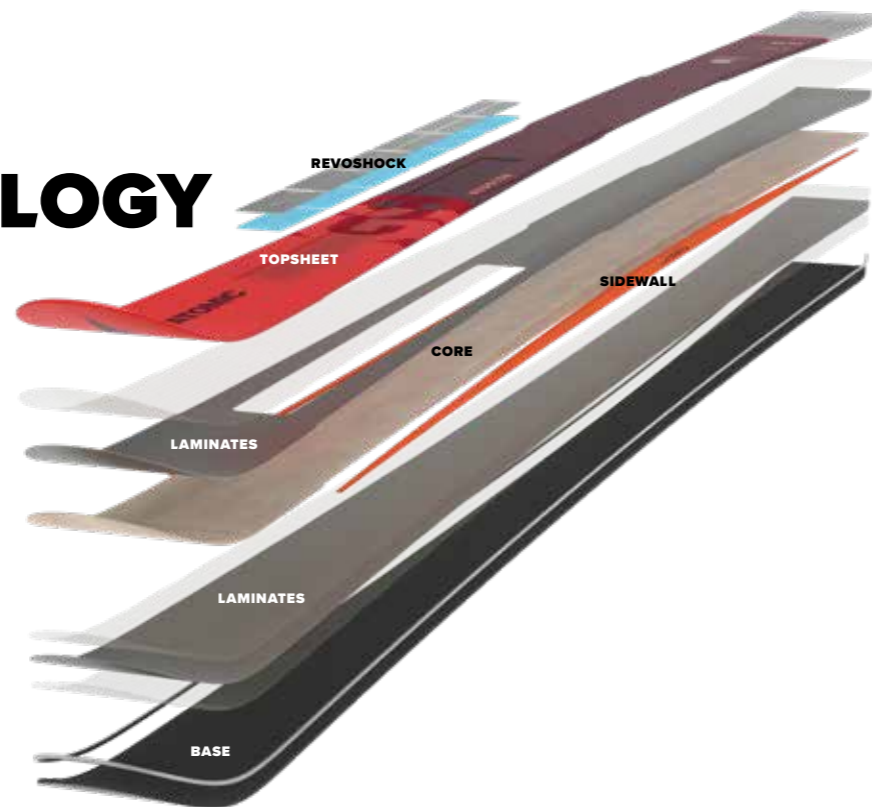


PRODUCT	ART. NO.	BINDINGS	LENGTH (cm)	RADIUS (m)	SIDE CUT TIP (mm)	SIDE CUT WAIST (mm)	SIDE CUT TAIL (mm)	FEATURES	PRICES
<b>REDSTER S9 FIS J-RP3</b>	AA0030304 AAST02244 AAST02246	- ICON 12 ICON 10	145 152	11 11.6	112.5 115.5	65 65	94 96.5	Ultra Power Woodcore, Ultra TI Powered, Dura Cap Sidewall, Structured Topsheet, Side Edge Angle: 87°, Base Edge Angle: 0.8°, World Cup Base Finish, Junior Race Interface	
<b>REDSTER S9 FIS J-RP3</b>	AA0030306 AAST02238 AAST02240 AAST02242	- ICON 10 COLT 7 GW C COLT 7 GW CA	124 131 138	8.9 9.7 10.4	105.5 107 108.5	65 65 65	88 89.5 91	Power Woodcore, Ultra TI Powered, Dura Cap Sidewall, Structured Topsheet, Side Edge Angle: 87°, Base Edge Angle: 0.8°, World Cup Base Finish, Junior Race Interface	
<b>REDSTER J9 RS J-RP</b>	AA0030320 AAST02222 AAST02214 AAST02220	- ICON 10 COLT 7 GW C COLT 7 GW CA	130 140 150 160	10 11 12 13	110.5 112 113.5 115	67.5 67.5 68 68	93 95 97 99	Light Woodcore, Densolite Core, Dura Cap Sidewall, Glossy Topsheet, Side Edge Angle: 87°, Base Edge Angle: 1.0°, Junior Race Interface	
<b>REDSTER J9 RS J-RP</b>	AA0030320 AAST02218 AAST02216	- COLT 7 GW C COLT 7 GW CA	110 120	8 9	107.5 109	67 67	89 91	Light Woodcore, Densolite Core, Dura Cap Sidewall, Glossy Topsheet, Side Edge Angle: 87°, Base Edge Angle: 1.0°, Junior Race Interface	

## JR ALLROUND



# REDSTER SKI TECHNOLOGY

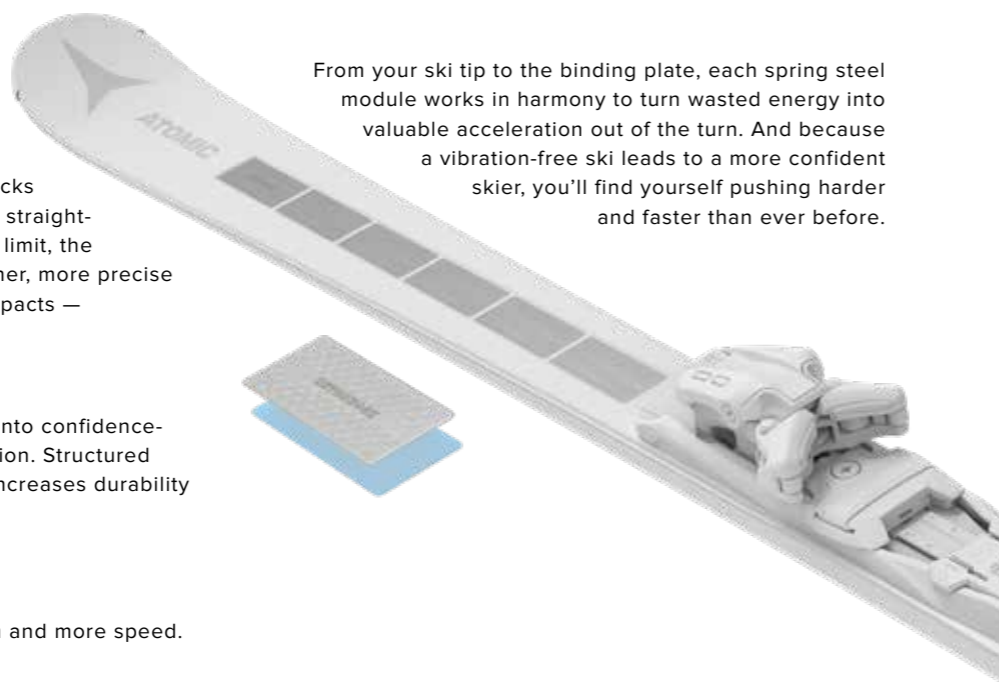


## CONSTRUCTION

### REVOSHOCK S

Utilizing a series of spring steel modules each encased in impact absorbing elastomer, the revolutionary Revoshock S technology acts like a built-in suspension system for your skis to block distracting shocks before they reach your feet. Whether you're straight-lining groomers or making fast turns at your limit, the race-proven Revoshock S provides a smoother, more precise run. But Revoshock S doesn't just absorb impacts — it rebounds them.

From your ski tip to the binding plate, each spring steel module works in harmony to turn wasted energy into valuable acceleration out of the turn. And because a vibration-free ski leads to a more confident skier, you'll find yourself pushing harder and faster than ever before.



### TOPSHEET

Redster Revoshock turns unwanted shocks into confidence-building stability and unparalleled acceleration. Structured topsheet: A structured topsheet massively increases durability and gives a high quality finish.

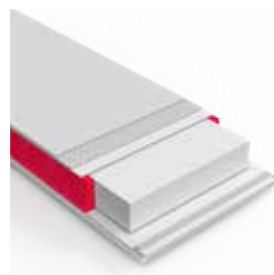
### BASE

World Cup Base Finish  
World Cup-level grinding means less friction and more speed.

## SIDEWALLS

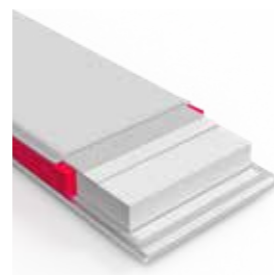
### FULL SIDEWALL

Full sidewall runs across the full length of the ski for precise steering.



### DURA CAP SIDEWALL

Sidewall from base to top sheet, for controlled power transmission and great edge grip. The rounded shape of the Dura Cap is a fantastic durability feature as it picks up fewer dents and dings.



## CORE

### ULTRA POWER WOODCORE

Made from strong beech and lightweight poplar — for supreme running stability and agility in our racing skis.



### POWER WOODCORE

A sporty, dynamic ash and poplar woodcore that adds a ton of stability and dampens vibrations at speed.



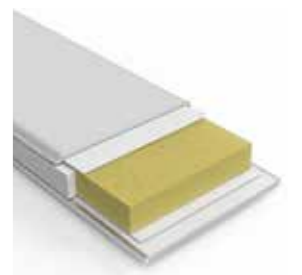
### LIGHT WOODCORE

Made from Poplar wood, this core optimizes the ski's weight without sacrificing any shock absorption or stability.



### DENSOLITE CORE

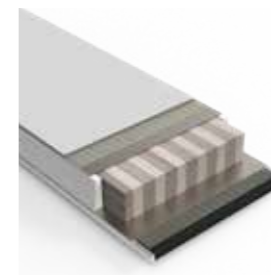
A foam core that's agile and dampens vibrations — for effortless skiing.



## LAMINATE

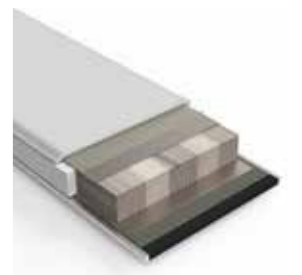
### ULTRA TI POWERED

Our World Cup, athlete-proven technology Ultra Titanium Powered with updated double bonding is a Titanal laminate that runs from sidewall to sidewall adding stability, torsional rigidity and edge grip.



### TI POWERED

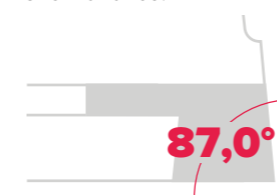
A Titanal layer above and below the core creates supreme shock absorption, strong running stability and high torsional flex.



## EDGE ANGLES

### SIDE EDGE ANGLE

Precisely tuned edges are an important part of ski performance. A dull edge cannot penetrate the snow surface and will skid through a turn. An edge that is too sharp will grab and catch the snow surface creating unstable performance. Our skis are prepared with a side edge angle of 87.0° for more intuitive handling, easier skiing and better grip on hard snow and ice.



### BASE EDGE ANGLE

All skis from our factory are delivered with steel edges that have been carefully machined with a precise base edge bevel for specific performance characteristics. For our FIS skis we're using base edge angles from 0.5° (SL) to 0.8° (GS and JR) and 1.0° (SG and DH). They lightly lift the ski edges off the snow for easy turning while maintaining excellent edge grip and aggressive tracking throughout the turn.



# ICON FAMILY

## ICON WC 30/24

The Icon loved and trusted by our World Cup athletes. A podium winner in all disciplines, its centralized power transmission delivers the highest levels of performance, agility and responsiveness.

## ICON RS 16/12

The Icon for athletes on their way to the World Cup! As well as masters and other strong racers. It has the same centralized power transmission as its big brother – Icon WC – tailor-made for racing through the age groups.

## ICON 12/10

The Icon for youngsters starting to get serious! It delivers the perfect weight and performance levels for children and juniors competing mainly in SL & GS – helping them stay in total control of their skis.



ICON WC 30



ICON WC 24



ICON RS 16



ICON RS 12



ICON 12



ICON 10



## BINDINGS TECHNICAL SPECIFICATIONS



AD5002208  
**ICON WC 30**  
RED / BLACK

AD5002210  
**ICON WC 24**  
RED / BLACK

AD5002298  
**ICON RS 16** **NEW**  
RED / BLACK

AD5002300  
**ICON RS 12** **NEW**  
RED / BLACK



AD5002302  
**ICON 12** **NEW**  
RED / BLACK

AD5002304  
**ICON 10** **NEW**  
RED / BLACK

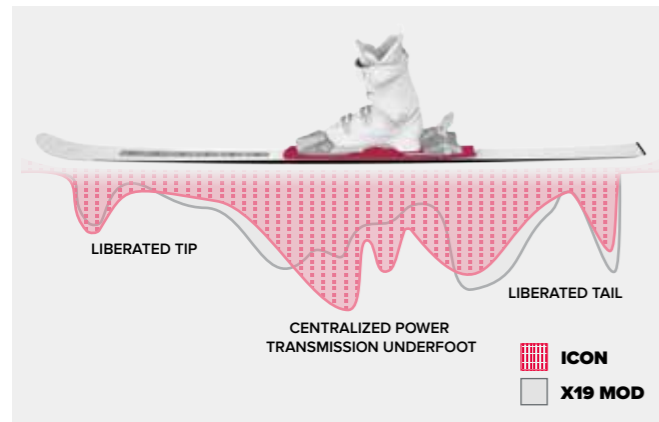
AD5002186  
**COLT 7 GW C**  
RED / BLACK

AD5002058  
**COLT 7 GW CA**  
BLACK / GREY

PRODUCT	ART. NO.	COLOR	DIN SCALE	RECOM. SKIER WEIGHT	ADJUSTM. RANGE (mm)	BRAKE WIDTH	WEIGHT (per Bind.)	BINDING / BOOT COMP.	FEATURES	PRICES
<b>ICON WC 30</b>	AD5002208	Red / Black	20-30	>95kg >209lbs	262-361	X75	1425g	Alpine A (Adult)	Centralized Power Transfer, Metal Race Pedal, Elevated Brakes, Steel & Aluminum Construction, Automatic Toe Adaptation, Locking Brakes	
<b>ICON WC 24</b>	AD5002210	Red / Black	14-24	>95kg >209lbs	262-361	X75	1425g	Alpine A (Adult)	Centralized Power Transfer, Metal Race Pedal, Elevated Brakes, Steel & Aluminum Construction, Automatic Toe Adaptation, Locking Brakes	
<b>ICON RS 16</b>	AD5002298	Red / Black	8-16	>66kg >145lbs	262-361	I75	1450g	Alpine A (Adult)	Centralized Power Transfer, Metal Race Pedal, Elevated Brakes, Steel & Fiberglass PA Construction, Automatic Toe Adaptation, Locking Brakes, TÜV certified	
<b>ICON RS 12</b>	AD5002300	Red / Black	4-12	49-120kg 108-264lbs	262-361	I75	1390g	Alpine A (Adult)	Centralized Power Transfer, Metal Race Pedal, Elevated Brakes, Steel & Fiberglass PA Construction, Automatic Toe Adaptation, Locking Brakes, TÜV certified	
<b>ICON 12</b>	AD5002302	Red / Black	4-12	49-120kg 108-264lbs	262-361	I75	1190g	Alpine A (Adult)	Centralized Power Transfer, Elevated Brakes, Race Pedal, Steel & Fiberglass PA Construction, Automatic Toe Adaptation, Locking Brakes, TÜV certified	
<b>ICON 10</b>	AD5002304	Red / Black	3-10	31-100kg 68-220lbs	262-361	I75	1180g	Alpine A (Adult)	Centralized Power Transfer, Elevated Brakes, Race Pedal, Steel & Fiberglass PA Construction, Automatic Toe Adaptation, Locking Brakes, TÜV certified	
<b>COLT 7 GW C</b>	AD5002186	Red / Black	2-7,5	22-85kg 44-187lbs	28	B75	860g	Alpine C (Child) + GripWalk C (Child)	Light Construction, Race Pedal, Automatic Toe Adaptation, Locking Brakes, TÜV certified	
<b>COLT 7 GW CA</b>	AD5002058	Black / Grey	2-7,5	22-85kg 44-187lbs	28	B75 B90 B100	860g	Alpine A (Adult) + GripWalk A (Adult) + Alpine C (Child) + GripWalk C (Child)	Light Construction, Race Kit Compatible, Automatic Toe Adaptation, Locking Brakes, TÜV certified	

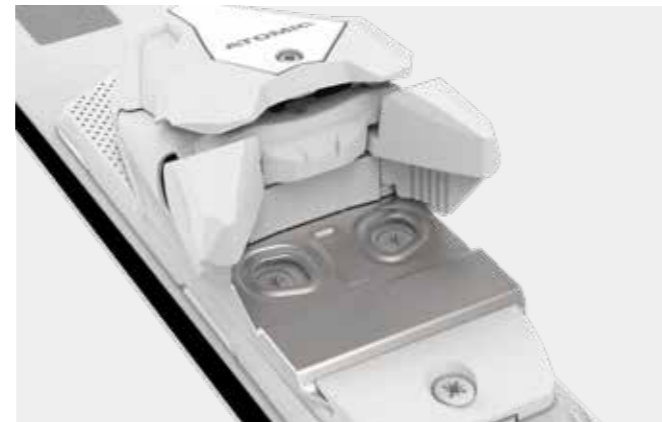
# RACE BINDING TECHNOLOGY

## ICON



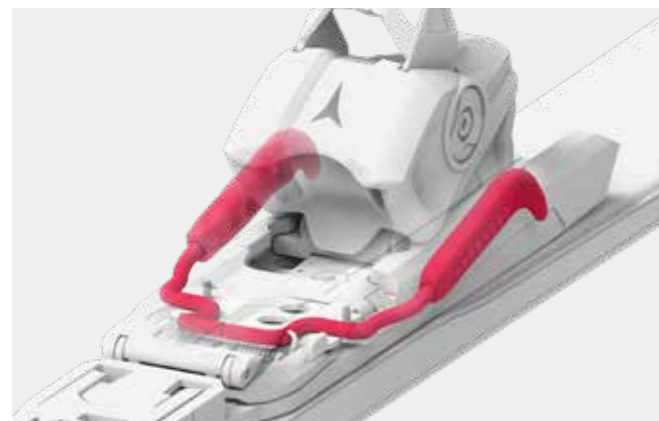
### CENTRALIZED POWER TRANSFER

A wider base plate and race mounting pattern strategically position the binding screws directly under the boot to centralize and optimize power transmission. Delivering immediate power underfoot while allowing for more reactivity and response throughout the entire length of the ski. Centralized Power Transfer enables the racer to be in better control of the ski throughout the turn – in every discipline and type of course setting.



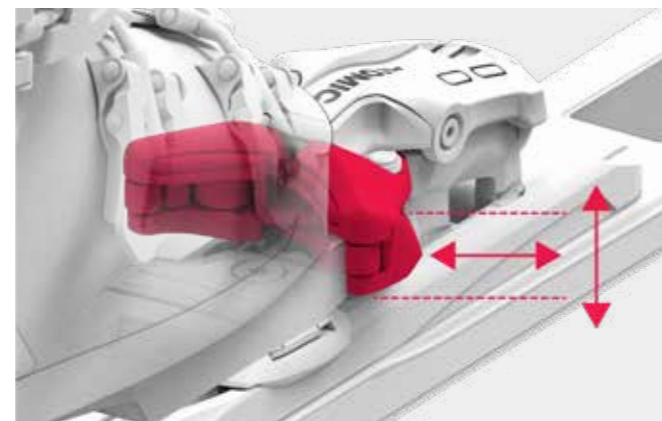
### METAL RACE PEDAL

Designed to deliver the best power transfer from boot to binding, Metal Race Pedal allows the boot to sit directly on the AFD for more direct energy transmission.



### ELEVATED BRAKES

Our Elevated Brakes get up and out of the way, tucked in closer to the heelpiece of your binding, letting you ski more aggressive edge angles with less risk of catching the snow.



### AUTOMATIC TOE ADAPTION

The toe adapts automatically to your alpine normed boot height and width and ensures constant release values, even on worn out boots.

## MOUNTING GUIDE

### ICON INTERFACE

#### BOOT SOLE LENGTH:

Mounting information on the plate

ICON WC 30 / ICON WC 24			ICON WC 30 & ICON WC 24		
	POSITION TOE	POSITION HEEL		POSITION TOE	POSITION HEEL
SOLE LENGTH (mm)	262 – 271	262 – 281	SOLE LENGTH (mm)	272 – 341	312 – 321
SOLE LENGTH (mm)	272 – 341	282 – 291	SOLE LENGTH (mm)	272 – 341	322 – 331
SOLE LENGTH (mm)	272 – 341	292 – 301	SOLE LENGTH (mm)	342 – 361	332 – 361
SOLE LENGTH (mm)	272 – 341	302 – 311			

#### ICON INTERFACE GS AND SG



#### ICON INTERFACE SL



#### FRONT: ICON WC 30, ICON WC 24, ICON RS 16 & ICON RS 12

1X2 DISTPLT FR ICON 24&30 RS16&RS12 1mm	set (2 pieces + screws)
1X2 DISTPLT FR ICON 24&30 RS16&RS12 2mm	set (2 pieces + screws)
1X2 DISTPLT FR ICON 24&30 RS16&RS12 3mm	set (2 pieces + screws)
1X2 DISTPLT FR ICON 24&30 RS16&RS12 4mm	set (2 pieces + screws)

#### FRONT: ICON 12 & ICON 10

1X2 DISTPLT FR ICON 12&10 1mm	set (2 pieces + screws)
1X2 DISTPLT FR ICON 12&10 2mm	set (2 pieces + screws)
1X2 DISTPLT FR ICON 12&10 3mm	set (2 pieces + screws)

#### REAR: ICON WC 30 & ICON WC 24

1X2 DISTPLT RR ICON 24&30 1mm	set (2 pieces + screws)
1X2 DISTPLT RR ICON 24&30 2mm	set (2 pieces + screws)
1X2 DISTPLT RR ICON 24&30 3mm	set (2 pieces + screws)
1X2 DISTPLT RR ICON 24&30 4mm	set (2 pieces + screws)

#### REAR: ICON RS 16, ICON RS 12, ICON 12 & ICON 10

1X2 DISTPLT RR ICON RS16&12 12&10 1mm	set (2 pieces + screws)
1X2 DISTPLT RR ICON RS16&12 12&10 2mm	set (2 pieces + screws)
1X2 DISTPLT RR ICON RS16&12 12&10 3mm	set (2 pieces + screws)
1X2 DISTPLT RR ICON RS16&12 12&10 4mm	set (2 pieces + screws)

### JUNIOR RACE PLATE (J-RP<sup>3</sup>) **NEW**

#### COMPATABILITY:

Icon & Colt

#### BOOT SOLE LENGTH:

ICON 10 / 12 = 252mm – 315mm (22.5–27.5)  
COLT 7 - 217mm – 266mm (17.5–22.5)



### JUNIOR RACE PLATE (J-RP<sup>3</sup>)

#### BOOT SOLE LENGTH:

Mounting information on the plate for COLT 7

- A:** > 217mm – 246mm
- B:** > 237mm – 266mm
- C:** > 256mm – 285mm
- D:** > 276mm – 305mm





# REDSTER FAMILY



## REDSTER STI

This highly anatomical 93mm narrow last is the lowest volume fit and has the ideal stability and stiffness for lighter racers.

## REDSTER TI

This highly anatomical 95mm narrow last is the most successful race boot in the modern era and the current choice of most of our World Cup athletes.

## REDSTER CS

This narrow 96mm last features more space in the forefoot and navicular areas for increased comfort while still retaining optimum foot hold for powerful skiing.

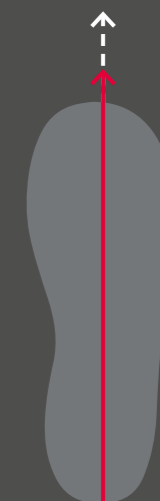
# THE REDSTER THREAD



Consistent liner constructions across all 3 fits



Same forward lean and ramp angle across all 3 fits



Same stance in all 3 fits

## BOOTS TECHNICAL SPECIFICATIONS

### RACE

#### REDSTER TI 95MM RACING LAST



PRODUCT	REDSTER TI 150 LIFTED	REDSTER TI 130	REDSTER TI 110
ART. NO.	AE5025980	AE5024340	AE5024360
COLOR	Red / Black	Red / Black	Red / Black
SIZE RANGE	22/22.5 - 29/29.5	22/22.5 - 29/29.5	22/22.5 - 29/29.5
SHELL TECHNOLOGY	Progressive Race Shell, +5mm Lifted Sole Height, True Size Mondo 22	Progressive Race Shell, True Size Mondo 22	Progressive Race Shell, True Size Mondo 22
CUFF TECHNOLOGY	Power Control, Dual-Sided Cuff Alignment	Power Control, Dual-Sided Cuff Alignment	Power Control, Dual-Sided Cuff Alignment
SHELL / CUFF MATERIAL	PU - H / PU - B	PU / PU	PU / PU
CUFF HEIGHT	Regular Cuff - All Sizes	Regular Cuff - All Sizes	Regular Cuff - All Sizes
LINER MODEL	Mimic World Cup	Mimic World Cup	World Cup
LINER TECHNOLOGY	Mimic, V3 Tongue System, 3D Stretch Toe Box, Full Microfiber Outer	Mimic, V3 Tongue System, 3D Stretch Toe Box, Full Microfiber Outer	V3 Tongue System, 3D Stretch Toe Box, Full Microfiber Outer
POWER STRAP	55mm Professional Dual Strap	55mm Professional Dual Strap	35mm Velcro Strap
CUFF CLOSURE	7000-Series Aluminium Buckles	7000-Series Aluminium Buckles	7000-Series Aluminium Buckles
SHELL CLOSURE	7000-Series Aluminium Buckles	7000-Series Aluminium Buckles	7000-Series Aluminium Buckles
LAST / FIT	95mm Racing Last	95mm Racing Last	95mm Racing Last
FORWARD LEAN SHELL ROTATION	16° (Default) / 18° / 0°	16° (Default) / 18° / 0°	16° (Default) / 18° / 0°
BOOT SOLE	Racing Sole (non-replaceable)	Racing Sole (non-replaceable)	Racing Sole (non-replaceable)
NORM	Not in compliance with Alpine Norm ISO 5355 - Grind before Use!	Alpine Norm ISO 5355 - Type A	Alpine Norm ISO 5355 - Type A
WEIGHT / MONDO SIZE	2.350g / 26-26.5	2.222g / 26-26.5	2.178g / 26-26.5
WHAT'S IN THE BOX	Size Adjuster, 2nd Power Control Screw, Liner Laces, Liner Spoiler	Size Adjuster, 2nd Power Control Screw, Liner Laces, Liner Spoiler	Size Adjuster, 2nd Power Control Screw, Liner Laces, Liner Spoiler
PRICES			

#### REDSTER STI 93MM RACING LAST



PRODUCT	REDSTER STI 150 LIFTED	REDSTER STI 130	REDSTER STI 110	REDSTER STI 90 LC	REDSTER STI 70 LC
ART. NO.	AE5025960	AE5024380	AE5024400	AE5024420	AE5024440
COLOR	Red / Black	Red / Black	Red / Black	Red / Black	Red / Black
SIZE RANGE	22/22.5 - 27/27.5	22/22.5 - 27/27.5	22/22.5 - 27/27.5	22/22.5 - 27/27.5	22/22.5 - 27/27.5
SHELL TECHNOLOGY	Slim Race Shell, +5mm Lifted Sole Height, True Size Mondo 22	Slim Race Shell, True Size Mondo 22	Slim Race Shell, True Size Mondo 22	Slim Race Shell, True Size Mondo 22	Slim Race Shell, True Size Mondo 22
CUFF TECHNOLOGY	Power Control, Dual-Sided Cuff Alignment	Power Control, Dual-Sided Cuff Alignment	Power Control, Dual-Sided Cuff Alignment	Power Control, Dual-Sided Cuff Alignment	Dual-Sided Cuff Alignment
SHELL / CUFF MATERIAL	PU - H / PU - B	PU / PU	PU / PU	PU / PU	PU / PU
CUFF HEIGHT	Regular Cuff - All Sizes	Regular Cuff - All Sizes	Regular Cuff - All Sizes	Low Cuff - All Sizes	Low Cuff - All Sizes
LINER MODEL	Mimic World Cup	Mimic World Cup	World Cup	World Cup	World Cup
LINER TECHNOLOGY	Mimic, V3 Tongue System, 3D Stretch Toe Box, Full Microfiber Outer	Mimic, V3 Tongue System, 3D Stretch Toe Box, Full Microfiber Outer	V3 Tongue System, 3D Stretch Toe Box, Full Microfiber Outer	V3 Tongue System, 3D Stretch Toe Box, Full Microfiber Outer	V3 Tongue System, 3D Stretch Toe Box, Full Microfiber Outer
POWER STRAP	55mm Professional Dual Strap	55mm Professional Dual Strap	35mm Velcro Strap	35mm Velcro Strap	35mm Velcro Strap
CUFF CLOSURE	7000-Series Aluminium Buckles	7000-Series Aluminium Buckles	7000-Series Aluminium Buckles	7000-Series Aluminium Buckles	7000-Series Aluminium Buckles
SHELL CLOSURE	7000-Series Aluminium Buckles	7000-Series Aluminium Buckles	7000-Series Aluminium Buckles	7000-Series Aluminium Buckles	7000-Series Aluminium Buckles
LAST / FIT	93mm Racing Last	93mm Racing Last	93mm Racing Last	93mm Racing Last	93mm Racing Last
FORWARD LEAN SHELL ROTATION	16° (Default) / 18° / 0°	16° (Default) / 18° / 0°	16° (Default) / 18° / 0°	16° (Default) / 18° / 0°	16° / 0°
BOOT SOLE	Racing Sole (non-replaceable)	Racing Sole (non-replaceable)	Racing Sole (non-replaceable)	Racing Sole (non-replaceable)	Racing Sole (non-replaceable)
NORM	Not in compliance with Alpine Norm ISO 5355 - Grind before Use!	Alpine Norm ISO 5355 - Type A	Alpine Norm ISO 5355 - Type A	Alpine Norm ISO 5355 - Type A	Alpine Norm ISO 5355 - Type A
WEIGHT / MONDO SIZE	2.219g / 24-24.5	2.186g / 24-24.5	1.918g / 24-24.5	1.850g / 24-24.5	1.798g / 24-24.5
WHAT'S IN THE BOX	Size Adjuster, 2nd Power Control Screw, Liner Laces, Liner Spoiler	Size Adjuster, 2nd Power Control Screw, Liner Laces, Liner Spoiler	Size Adjuster, 2nd Power Control Screw, Liner Laces, Liner Spoiler	Size Adjuster, 2nd Power Control Screw, Liner Laces	Size Adjuster, Liner Laces
PRICES					

## BOOTS TECHNICAL SPECIFICATIONS

### PISTE

**REDSTER CS**  
96MM NARROW LAST

**REDSTER JR**  
98MM JUNIOR LAST



PRODUCT	REDSTER CS 130	REDSTER CS 110	REDSTER CS 70 LC	REDSTER JR 60 RS	REDSTER JR 60
ART. NO.	AE5029460	AE5029480	AE5029500	AE5025440	AE5025460
COLOR	Red / Black	Red / Black	Red / Black	Red / Black	Red / Black
SIZE RANGE	23/23.5 - 29/29.5	21/21.5 - 29/29.5	21/21.5 - 27/27.5	18/18.5 - 27/27.5	18/18.5 - 27/27.5
SHELL TECHNOLOGY	Memory Fit, Progressive Race Shell, Integrated 3mm Lift	Memory Fit, Progressive Race Shell, Integrated 3mm Lift, True Size Mondo 21, True Size Mondo 22	Memory Fit, Progressive Race Shell, Integrated 3mm Lift, True Size Mondo 21, True Size Mondo 22	Junior Performance Shell	Junior Performance Shell
CUFF TECHNOLOGY	Power Shift Race, Dual-Sided Cuff Alignment	Power Shift Race, Dual-Sided Cuff Alignment	Dual-Sided Cuff Alignment	Progressive Cuff Design	Progressive Cuff Design
SHELL / CUFF MATERIAL	PU / PU	PU / PU	PU / PU	PU / PP	PP / PP
CUFF HEIGHT	Regular Cuff - All Sizes	Regular Cuff - All Sizes	Low Cuff - All Sizes	Low Cuff - All Sizes	Low Cuff - All Sizes
LINER MODEL	Mimic World Cup	Mimic Gold	Select Silver	Select Silver JR	Select Silver JR
LINER TECHNOLOGY	Mimic, V3 Tongue System, 3D Stretch Toe Box, Full Microfiber Outer	Mimic, 3D Stretch Toe Box, Full Microfiber Outer	3D Stretch Toe Box, Full Microfiber Outer	-	-
POWER STRAP	55mm Professional Dual Strap	35mm Velcro Strap	35mm Velcro Strap	30mm Velcro Strap	30mm Velcro Strap
CUFF CLOSURE	7000-Series Aluminium Buckles	7000-Series Aluminium Buckles	7000-Series Aluminium Buckles	6000-Series Aluminium Buckles	6000-Series Aluminium Buckles
SHELL CLOSURE	7000-Series Aluminium Buckles	7000-Series Aluminium Buckles	7000-Series Aluminium Buckles	6000-Series Aluminium Buckles	6000-Series Aluminium Buckles
LAST / FIT	96mm Narrow Last	96mm Narrow Last	96mm Narrow Last	98mm Junior Last	98mm Junior Last
FORWARD LEAN SHELL ROTATION	16° (Default) / 18° / 0°	16° (Default) / 18° / 0°	16° / 0°	15°	15°
BOOT SOLE	Racing Sole (non-replaceable)	Racing Sole (non-replaceable)	Racing Sole (non-replaceable)	JR Grip Pads	JR Grip Pads
NORM	Alpine Norm ISO 5355 - Type A	Alpine Norm ISO 5355 - Type A	Alpine Norm ISO 5355 - Type A	18-21.5 Alpine Norm ISO 5355 - Type C , 22-27.5 Alpine Norm ISO 5355 - Type A	18-21.5 Alpine Norm ISO 5355 - Type C , 22-27.5 Alpine Norm ISO 5355 - Type A
WEIGHT / MONDO SIZE	2.262g / 26-26.5	2.208g / 26-26.5	1.899g / 24-24.5	1.520g / 24-24.5	1.350g / 24-24.5
WHAT'S IN THE BOX	Size Adjuster, 18° Power Shift Race Shim, 2nd Power Shift Race Screw, Liner Laces, Liner Spoiler	Size Adjuster, 18° Power Shift Race Shim, 2nd Power Shift Race Screw	Size Adjuster	Size Adjuster	Size Adjuster

### PRICES

## REDSTER AFTERMARKET PARTS



**REDSTER FULL FOAM PROFESSIONAL LINER NEW**  
AZE002050  
BLACK/CARBON  
SIZES: 22/22.5 - 29/29.5



**FULL FOAM KIT NEW**  
AZE002052 - 22-24  
AZE002054 - 25-27  
AZE002056 - 28-29



**PROFESSIONAL FOAM CARTRIDGE**  
AZE001770



**REDSTER MIMIC PROFESSIONAL LINER**  
AZE001952  
BLACK/CARBON  
SIZES: 22/22.5 - 29/29.5



**V³ TONGUE SYSTEM THICK - LV FIT**  
AZE001710 / WHITE - 22-23  
AZE001712 / WHITE - 24-25  
AZE001714 / WHITE - 26-27  
AZE001716 / WHITE - 28-29  
AZE001718 / WHITE - 30-31



**V³ TONGUE SYSTEM MEDIUM - MV FIT**  
AZE001700 / BLACK - 22-23  
AZE001702 / BLACK - 24-25  
AZE001704 / BLACK - 26-27  
AZE001706 / BLACK - 28-29  
AZE001708 / BLACK - 30-31



**V³ TONGUE SYSTEM THIN - HV FIT**  
AZE001720 / RED - 22-23  
AZE001722 / RED - 24-25  
AZE001724 / RED - 26-27  
AZE001726 / RED - 28-29  
AZE001728 / RED - 30-31



**STI/TI MIMIC WORLD CUP LINER**  
AZE001842  
SIZES: 22/22.5 - 27/27.5



**LOW CUFF WORLD CUP LINER**  
AZE001532  
SIZES: 22/22.5 - 27/27.5



**CS MIMIC WORLD CUP LINER**  
AZE001852  
SIZES: 23/23.5 - 29/29.5



**DUAL VELCRO LINER SPOILER**  
AZE001788



**SHOCKSTOPPER LINER SPOILER NEW**  
AZE002068

## REDSTER AFTERMARKET PARTS

### POWER STRAPS



**55MM PROFESSIONAL DUAL STRAP NEW**  
AZE002060 / SHORT  
AZE002118 / LONG



**45MM PROFESSIONAL STRAP NEW**  
AZE002062 / SHORT  
AZE002120 / LONG

### LIFTERS



**REDSTER AR LIFTER KIT**  
3MM: AZE001262 / 21-24  
3MM: AZE001264 / 25-29  
5MM: AZE001266 / 21-24  
5MM: AZE001268 / 25-29



**REDSTER RT LIFTER KIT**  
3MM: AZE001488 / 22-25  
3MM: AZE001492 / 26-29  
5MM: AZE001490 / 22-25  
5MM: AZE001494 / 26-29



**REDSTER DUAL COMPONENT LIFTER**  
AZE001794 / BLACK/RED: 21-24  
AZE001796 / BLACK/RED: 25-29



**REDSTER DUAL COMPONENT LIFTER NEW**  
AZE002092 / BLACK 21-24  
AZE002090 / BLACK 25-29

### BOOT BOARDS



**REDSTER RT**  
COMPATABILITY: STI, TI  
AZE001590



**REDSTER AR**  
COMPATABILITY: CS  
AZE001406



**SHOCKSTOPPER REDSTER CS**  
COMPATABILITY: CS  
AZE001810



**REDSTER SPEED CUFF A HARDNESS**  
FOR 130 FLEX BOOTS  
AZE001954 / 22-23.5  
AZE001956 / 24-25.5  
AZE001958 / 26-27.5  
AZE001960 / 28-29.5



**REDSTER SPEED CUFF B HARDNESS**  
FOR 150 AND 170 FLEX BOOTS  
AZE001962 / 22-23.5  
AZE001964 / 24-25.5  
AZE001966 / 26-27.5  
AZE001968 / 28-29.5



**REDSTER BOOT BLANKET**  
STI - TI - CS  
AZE001610 - S (≤25)  
AZE001612 - M (≥26)

## SHOP TOOLS / PROFESSIONAL TOOLS



**STAR NUT TOOL NEW**  
AZE002126  
COMES IN A PACK OF THREE



**CUFF ALIGNMENT TOOL NEW**  
AZE002124  
COMES IN A PACK OF TWO



**PROFESSIONAL BOOT SPREADER**  
AM5008791001



**PROFESSIONAL BOOT PRESS**  
AM5008781001

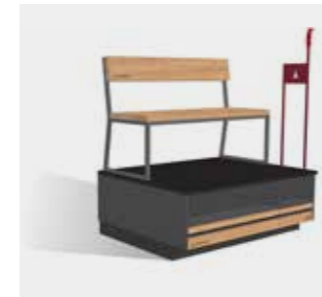


**BOOT PRESS TOE PUNCH SET**  
AM5008821001



**PROFESSIONAL FOAMING GUN**  
AZE001618

### FIT AREA TOOLS



**BOOT FIT BENCH**  
AM5007611  
130 cm wide x 102 cm deep x 148 cm high



**PROFESSIONAL LINER PODIUM**  
AM5008771

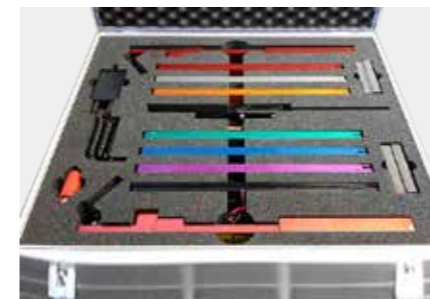


**MIMIC LINER SOCK SET**  
AZE001638  
1x S / 2 x M / 1x L



**TOE CAP SET**  
AZE001640  
1x S / 1x M / 1x L

**MIMIC SHOE HORN SET**  
AZE001642



**CANTING ASSESSMENT SYSTEM**  
AM5006331001  
To know which amount of sole canting is right for your customer, we developed the Canting Assessment System. Precision machined from billet aluminum, it is incredibly accurate and delivers consistent, repeatable results. The plate angle that you select is the angle that you set the boot up to. Plates range from 0.0° - 3.0°, every half degree.



**ATOMIC CANTMATE SYSTEM**  
AM5007781001 80 cm wide x 38 cm deep x 73h cm high  
Cantmate elegantly combines sole canting, ramp angle adjustments and toe & heel routing into one tool, efficiently maximizing available workspace. Precision milled from aluminum in Sweden & tested with calibration equipment from Zeiss, it can plane a sole in increments of 0.25°. Items included: Cantmate device, Festool router, cutting bits, ISO 5355 height gauge and digital angle cube.

# REDSTER BOOT TECHNOLOGY

## MIMIC PROFESSIONAL

Mimic Professional injects advanced foam compounds into revolutionary Mimic liner technology to create a customized fit that forms around the exact shape of the foot. The result is a liner that delivers the supreme fit, unrivaled comfort, and next-level performance.

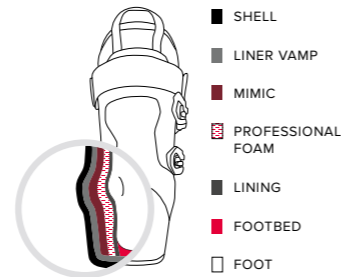
### 1. HEAT THE MIMIC ZONES IN THE OVEN



### 2. INJECT PROFESSIONAL FOAM INTO THE LINER



### 3. MIMIC: NEXT-TO-SHELL FIT; PROFESSIONAL FOAM: NEXT-TO-FOOT FIT



### PROFESSIONAL DUAL STRAP

The innovative Professional Dual Strap combines two elements together for secure, balanced performance. Elastic shock absorbing portion smooths out choppy terrain and increases damping while static section provides pure power and energy transmission.



### PROGRESSIVE RACE SHELL

Our Redster TI and CS boots feature a special shell made from thicker but softer material. This provides a more progressive flex and better damping, plus a more supple feel – making it easier to ski aggressively in all conditions and on all courses.



### V³ TONGUE SYSTEM

Customizable V³ Tongue System allows you to select the ideal tongue thickness to suit your needs. Choose between the thickest Low Volume (LV) fit, the medium thick Medium Volume (MV) fit and the thinnest High Volume (HV) fit for the ultimate interface between shin and liner.



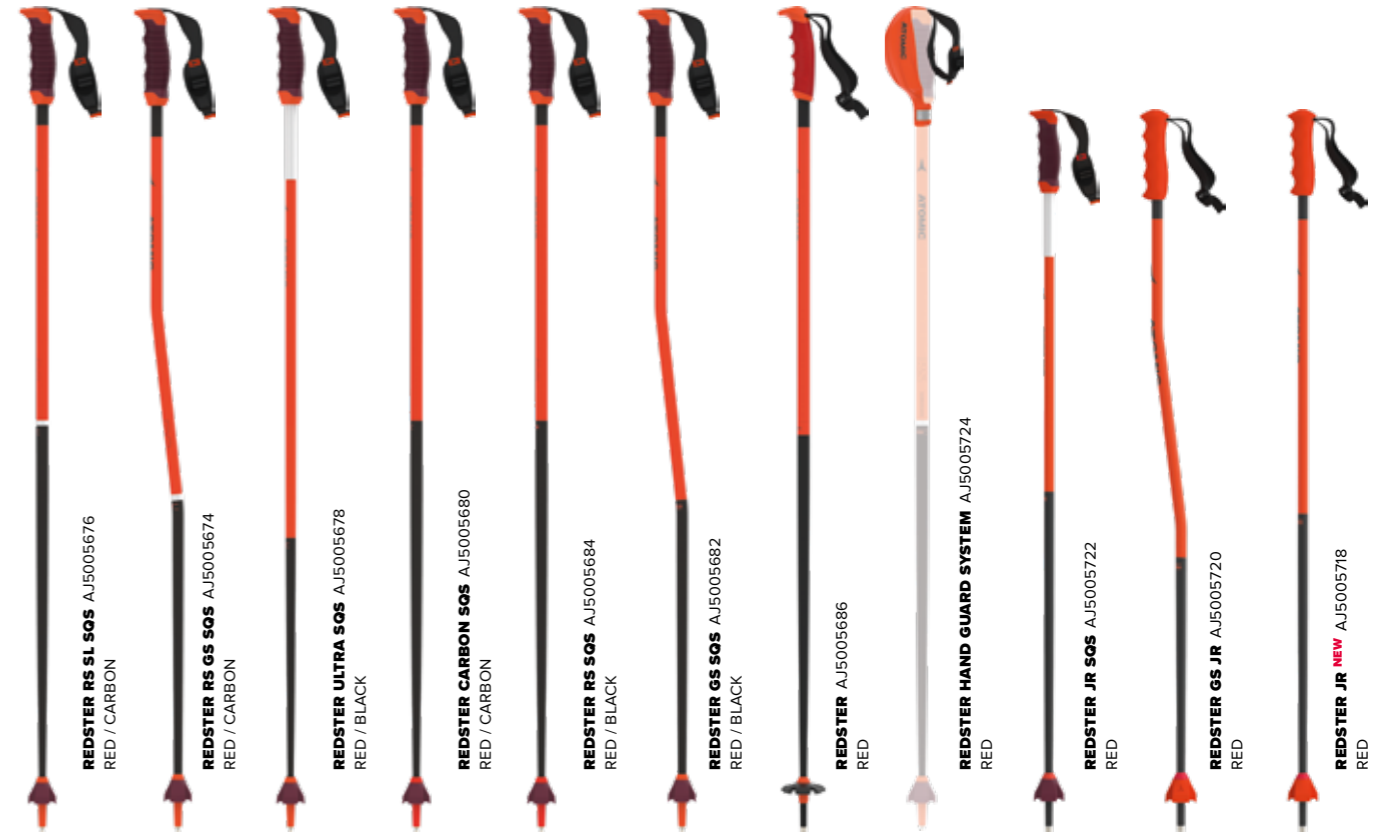
### 3D STRETCH TOE BOX

Asymmetrically shaped for left and right, the new 3D Stretch Toe Box takes first fit and customization potential to the next level. Its 'Big Toe Friendly' construction maximizes the liner's available length allowing for a little extra stretch when important millimeters are required to achieve the perfect fit.

## POLES TECHNICAL SPECIFICATIONS

### REDSTER

### REDSTER JR



PRODUCT	ART. NO.	COLOR	SIZES (cm)	SHAFT	GRIP	STRAP	BASKET	TIP	FEATURES	WEIGHT	PRICES
<b>REDSTER RS SL SQS</b>	AJ5005676	Red / Carbon	110, 115, 120, 125, 130, 135	6" Carbon Pole Technology, 3K Kevlar	Ergonomic Redster Grip (2K)	Pro Strap	Race Basket (40mm)	Carbide Tip	Safety Quick Release System, Hand Guard-ready, Ergonomic M-Fit	240g / 120cm	
<b>REDSTER RS GS SQS</b>	AJ5005674	Red / Carbon	110, 115, 120, 125, 130, 135	6" Carbon Pole Technology, Bent Shaft, 3K Kevlar	Ergonomic Redster Grip (2K)	Pro Strap	Race Basket (40mm)	Carbide Tip	Safety Quick Release System, Ergonomic M-Fit	280g / 120cm	
<b>REDSTER ULTRA SQS</b>	AJ5005678	Red / Black	110, 115, 120, 125, 130, 135	6" Carbon Pole Technology	Ergonomic Redster Grip (2K)	Pro Strap	Race Basket (40mm)	Carbide Tip	Safety Quick Release System, Hand Guard-ready, Ergonomic M-Fit	210g / 120cm	
<b>REDSTER CARBON SQS</b>	AJ5005680	Red / Carbon	110, 115, 120, 125, 130, 135	6" Carbon Pole Technology	Ergonomic Redster Grip (2K)	Pro Strap	Race Basket (40mm)	Carbide Tip	Safety Quick Release System, Hand Guard-ready, Ergonomic M-Fit	220g / 120cm	
<b>REDSTER RS SQS</b>	AJ5005684	Red / Black	110, 115, 120, 125, 130, 135	5" Aluminum Pole Technology	Ergonomic Redster Grip (2K)	Premium Strap	Race Basket (40mm)	Carbide Tip	Safety Quick Release System, Hand Guard-ready, Ergonomic M-Fit	230g / 120cm	
<b>REDSTER GS SQS</b>	AJ5005682	Red / Black	110, 115, 120, 125, 130, 135	5" Aluminum Pole Technology, Bent Shaft	Ergonomic Redster Grip (2K)	Premium Strap	Race Basket (40mm)	Carbide Tip	Safety Quick Release System, Ergonomic M-Fit	300g / 120cm	
<b>REDSTER</b>	AJ5005686	Red	110, 115, 120, 125, 130, 135	4" Aluminum Pole Technology	Ergonomic Redster Grip	Essential Strap	Race Basket (60mm)	Steel Tip	Ergonomic M-Fit	255g / 120cm	
<b>REDSTER HAND GUARD SYSTEM</b>	AJ5005724	Red				Pro Strap			Compatible with all Redster SQS models	130g	
<b>REDSTER JR SQS</b>	AJ5005722	Red	70, 75, 80, 85, 90, 95, 100, 105, 110, 115, 120	5" Aluminum Pole Technology	Ergonomic Redster Grip (2K)	Premium Strap	Race Basket (40mm)	Steel Tip	Safety Quick Release System, Hand Guard-ready, Ergonomic JR Fit	150g / 90cm	
<b>REDSTER GS JR</b>	AJ5005720	Red	90, 95, 100, 105, 110	4" Aluminum Pole Technology, Bent Shaft	Ergonomic JR Grip (1K)	Essential Strap	Race Basket (40mm)	Steel Tip	Ergonomic JR Fit	150g / 90cm	
<b>REDSTER JR</b>	AJ5005718	Red	70, 75, 80, 85, 90, 95, 100, 105	3" Aluminum Pole Technology	Ergonomic JR Grip (1K)	Essential Strap	Race Basket (40mm)	Steel Tip	Ergonomic JR Fit	150g / 90cm	

# HELMETS TECHNICAL SPECIFICATIONS

## RACE

### REDSTER WC CTD



AN5006116  
**REDSTER WC CTD**  
BLACK

AN5006120  
**REDSTER WC CTD**  
RED

AN5006122  
**REDSTER WC CTD**  
GREY

### REDSTER



AN5006132  
**REDSTER**  
BLACK

AN5006136  
**REDSTER**  
RED

AN5006134  
**REDSTER**  
WHITE

AN5006138  
**REDSTER**  
GREY

AN5006498  
**REDSTER**  
TEAL BLUE

AN5006500  
**REDSTER**  
PURPLE

PRODUCT	ART. NO. COLOR	SIZES - WEIGHT	SAFETY TECH.	FIT	CONSTRUCTION / VENTING / LINING	EXTRAS	CERTIFICATION	PRICES
<b>REDSTER WC CTD</b>	AN5006116 Black	XS (51-53) S (53-55) M (55-57) L (57-59) XL (59-61) XXL (61-63) -	Shocksense, AMID, Holo Core	360° RS Fit System, Live Fit, 3D Molded Ear Pads	Carbon Racecase / Aircon Venting / Merino 3M <sup>™</sup> X-Static Lining, RS Full Cap Liner	Atomic Shocksense App, Impact Assessment, SOS Alert Function, Magnetic Fidlock <sup>®</sup> Buckle, Attachable RS Helmet Bag, Acoustic Plates, Chin Guard Compatible, Removable Goggle Clip	CE EN 1077:2007 CLASS A, ASTM F 2040, FIS RH 2013	
	AN5006120 Red	600g / S						
	AN5006122 Grey							
<b>REDSTER</b>	AN5006132 Black		AMID, Holo Core	360° RS Fit System, Live Fit, 3D Molded Ear Pads	ABS Racecase / Aircon Venting / 3M <sup>™</sup> X-Static Lining, RS Full Cap Liner	Magnetic Fidlock <sup>®</sup> Buckle, Acoustic Plates, Chin Guard Compatible, Removable Goggle Clip, Helmet Bag	CE EN 1077:2007 CLASS A, ASTM F 2040, FIS RH 2013	
	AN5006136 Red	XS (51-53) S (53-55)						
	AN5006134 White	M (55-57) L (57-59)						
	AN5006138 Grey	XL (59-61) XXL (61-63) -						
	AN5006498 Teal Blue	700g / S						
AN5006500 Purple								

## RACE JUNIOR

### REDSTER JR



AN5006142  
**REDSTER JR**  
BLACK

AN5006146  
**REDSTER JR**  
RED

AN5006430  
**REDSTER JR**  
TEAL BLUE

AN5006144  
**REDSTER JR**  
WHITE

### CHIN GUARD



AN5006228  
**REDSTER CHIN GUARD SYSTEM**  
BLACK

PRODUCT	ART. NO. COLOR	SIZES - WEIGHT	SAFETY TECH.	FIT	CONSTRUCTION / VENTING / LINING	EXTRAS	CERTIFICATION	PRICES
<b>REDSTER JR</b>	AN5006142 Black	S/M (51-55) M/L (55-59) -	Holo Core	360° Fit System, Live Fit, 3D Molded Ear Pads	ABS Racecase / Aircon Venting / RS Liner	Acoustic Plates, Chin Guard Compatible, Helmet Bag	CE EN 1077:2007 CLASS A, ASTM F 2040, FIS RH 2013	
	AN5006146 Red							
	AN5006430 Teal Blue							
	AN5006144 White							
<b>REDSTER CHIN GUARD SYSTEM</b>	AN5006228 Black	one Size fits all				Compatible with: Redster WC CTD, Redster CTD, Redster, Redster JR CTD, Redster JR		

# HELMETS TECHNICAL SPECIFICATIONS

## RACE

### REDSTER SL CTD



AN5006302 **EXCLUSIVE REDSTER SL CTD**  
BLACK

### REDSTER SL



AN5006308 **REDSTER SL**  
BLACK



AN5006312 **REDSTER SL**  
RED



AN5006310 **REDSTER SL**  
WHITE / GREY



AN5006502 **REDSTER SL**  
TEAL BLUE



AN5006504 **REDSTER SL**  
PURPLE

PRODUCT	ART. NO. COLOR	SIZES - WEIGHT	SAFETY TECH.	FIT	CONSTRUCTION / VENTING / LINING	EXTRAS	CERTIFICATION	PRICES
<b>REDSTER SL CTD</b>	AN5006302 Black	S (51-55) M (55-59) L (59-63) XL (63-65)* - 400g / S	Shocksense, AMID, Holo Core	360° Fit System, Live Fit, 3D Molded Ear Pads	PC Racecase / Aircon Venting / Remove-/Washable Full Cap Liner, 3M™ X-Static Lining	Atomic Shocksense App, Impact Assessment, SOS Alert Function, Magnetic Fidlock® Buckle, Adjustable Chin Guard included, Removable Goggle Clip, Helmet Bag	CE EN 1077:2007 CLASS B, ASTM F 2040	
<b>REDSTER SL</b>	AN5006308 Black AN5006312 Red AN5006310 White / Grey AN5006502 Teal Blue AN5006504 Purple	S (51-55) M (55-59) L (59-63) XL (63-65)* - 380g / S	AMID, Holo Core	360° Fit System, Live Fit, 3D Molded Ear Pads	PC Racecase / Aircon Venting / Remove-/Washable Full Cap Liner, 3M™ X-Static Lining	Magnetic Fidlock® Buckle, Adjustable Chin Guard included, Helmet Bag	CE EN 1077:2007 CLASS B, ASTM F 2040	

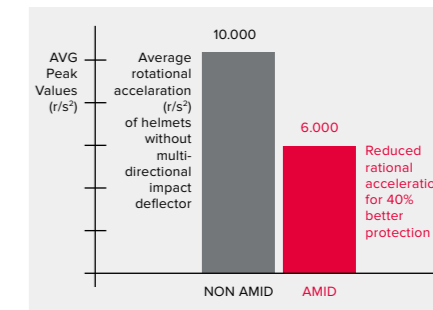
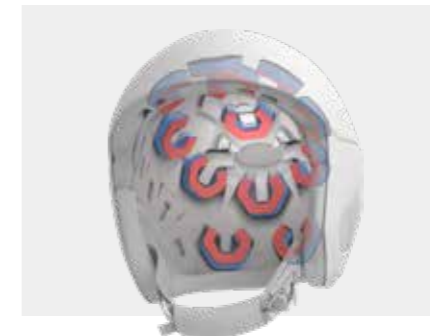
\* black only

# REDSTER HELMETS TECHNOLOGY

## SURPREME PROTECTION

### AMID

AMID stands for Atomic Multi-directional Impact Deflector and is our own development. It's a revolutionary dual-density foam system which is fixed to the helmet's core and free to move in all directions. This means better protection against impacts from all directions – as the foam cushions energy right at impact, then continues to deflect energy away from the head through its movement. By absorbing energy through the whole impact, it provides a new level of protection, whether the impact is high speed or low speed, direct or angled.



## INSTANT FIT

### 360° RS FIT SYSTEM

The 360° RS Fit System lets you tailor your helmet to exactly your head shape, size and height. For an extra layer of fine-tuning, it also comes with customizable Live Fit pads on each side of your head that allow you to perfectly fit the helmet to a more oval or round head shape.



### 360° FIT SYSTEM + LIVE FIT

Live Fit pads form a wide band of memory foam that adapts precisely to your head for an instant individual fit. The progressive height-adjustable 360° Fit System lets you finetune the helmet to your head size – and also your headshape. It's 100% personalized comfort guaranteed for every skier.



## RACE CONSTRUCTION

### CARBON RACECASE

The handcrafted Carbon Racecase is supremely stiff, strong and super light. Featuring a multi-directional layup for unrivaled protection and structural stability, it's specifically designed for racing.



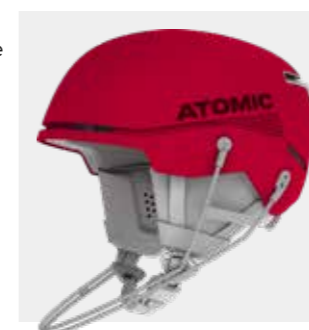
### ABS RACECASE

The injection-molded ABS Racecase is a stiff and strong shell, designed for guaranteed protection when skiing at speed.



### PC RACECASE

Our super durable PC Racecase delivers world-cup level protection. It's a strong outer layer that provides protection from the high impacts you can get while racing, including hitting gates at speed.



## GOGGLES TECHNICAL SPECIFICATIONS

### REDSTER

#### REDSTER WC HD



AN5106378 **EXCLUSIVE REDSTER WC HD**  
BLACK  
GREEN HD  
CAT. HD 3-2  
—  
3 EXTRA LENSES

AN5106380 **EXCLUSIVE REDSTER WC HD**  
RED  
RED HD  
CAT. HD 3-2  
—  
3 EXTRA LENSES

#### REDSTER WC HD JR



AN5106392 **EXCLUSIVE REDSTER WC HD JR**  
BLACK  
GREEN HD  
CAT. HD 3-2  
—  
2 EXTRA LENSES

AN5106394 **EXCLUSIVE REDSTER WC HD JR**  
RED  
RED HD  
CAT. HD 3-2  
—  
2 EXTRA LENSES

#### REDSTER HD



AN5106666 **REDSTER HD NEW**  
BLACK  
GREEN HD  
CAT. HD 3-2

AN5106668 **REDSTER HD NEW**  
LIGHT GREY  
SILVER HD  
CAT. HD 3-2

AN5106670 **REDSTER HD NEW**  
RED  
RED HD  
CAT. HD 3-2

AN5106672 **REDSTER HD NEW**  
TEAL BLUE  
SILVER HD  
CAT. HD 3-2

AN5106674 **REDSTER HD NEW**  
GREEN  
RED HD  
CAT. HD 3-2

PRODUCT	ART. NO.	COLOR	FIT	LENS TYPE	CAT.	VLT	WEATHER	FRAME AND EXTRAS	LENS TECHNOLOGY	PRICES
<b>REDSTER WC HD</b>	AN5106378	Black	Large	Green HD, Extra L.1: Blue HD Extra L.2: Yellow/Blue HD Extra L.3: Clear	HD 3-2	—	performs best in Cat.3-2	Live Fit Frame, Over The Glasses (OTG LITE), Adaptive LF Tri-Layer Face Foam, Vent Foam, Silicone-coated Strap, WC Lens Setup, incl. Microfiber Lens Sleeve, incl. 3D molded EVA Box	HD Lens Technology, Toric Double Lens, Sealed Lens System, Anti-scratch Outer Lens (PC), Hydrophobic Lens Coating, Anti-fog Inner Lens (AC)	
	AN5106380	Red	Large	Red HD, Extra L.1: Blue HD Extra L.2: Yellow/Blue HD Extra L.3: Clear	HD 3-2	—	performs best in Cat.3-2			
<b>REDSTER WC HD JR</b>	AN5106392	Black	Medium	Green HD, Extra L.1: Yellow/Blue HD Extra L.2: Clear	HD 3-2	—	performs best in Cat.3-2	Live Fit Frame, Over The Glasses (OTG LITE), Adaptive LF Tri-Layer Face Foam, Vent Foam, Silicone-coated Strap, incl. Microfiber Goggle Bag, WC Lens Setup, incl. Microfiber Lens Sleeve	HD Lens Technology, Toric Double Lens, Easy Lens Switch, Anti-scratch Outer Lens (PC), Hydrophobic Lens Coating, Anti-fog Inner Lens (AC)	
	AN5106394	Red	Medium	Red HD, Extra L.1: Yellow/Blue HD Extra L.2: Clear	HD 3-2	—	performs best in Cat.3-2			
<b>REDSTER HD</b>	AN5106666	Black	Large	Green HD	HD 3-2	—	performs best in Cat.3-2			
	AN5106668	Light Grey	Large	Silver HD	HD 3-2	—	performs best in Cat.3-2			
	AN5106670	Red	Large	Red HD	HD 3-2	—	performs best in Cat.3-2	Live Fit Frame, Over The Glasses (OTG LITE), Adaptive LF Tri-Layer Face Foam, Vent Foam, Silicone-coated Strap, incl. Microfiber Lens Sleeve	HD Lens Technology, Toric Double Lens, Sealed Lens System, Anti-scratch Outer Lens (PC), Hydrophobic Lens Coating, Anti-fog Inner Lens (AC)	
	AN5106672	Teal Blue	Large	Silver HD	HD 3-2	—	performs best in Cat.3-2			
	AN5106674	Green	Large	Red HD	HD 3-2	—	performs best in Cat.3-2			

# SEE BETTER. SKI BETTER.

With over two million working parts, the human eye is the most complex sensory organ of all. And to ensure a clear line of sight in even the most extreme mountain conditions, Atomic lens technology is just as advanced. As skiers ourselves, we know what skiers need, and we know that it all starts with clear vision. Applying our rigorous technical approach, we've designed, tested and perfected our goggles to help you progress, with HD lens tech to enhance color and contrast in all conditions.

## HD LENS TECHNOLOGY

Engineered at our design center in Austria, HD lens technology is a proprietary innovation from Atomic that provides incredible depth perception for crystal clear vision in all light conditions. As skiers ourselves, we know from experience that flat light reduces confidence by making it harder to pick out variations in terrain. We developed our HD lens technology to dial up color, contrast and clarity like never before. Micro-crystals within the lens divide white light into its six spectral colors, enhancing the sensitive red and blue ones to radically improve depth perception, reduce eye fatigue and build your confidence in all conditions.



## FRAME TECHNOLOGY



### DIFFERENT FRAME SIZES

As well as different styles, our goggles come in different frame sizes. Ready to fit all face shapes.



### SEALED LENS SYSTEM

The new Seald Lens System shuts out wind and water so even on powder days your goggles stay airtight: zero moisture, zero fogging, max visibility. It also allows you to switch lenses easily when needed.



## BODY PROTECTION TECHNICAL SPECIFICATIONS

### LIVE SHIELD VEST AMID MEN



AN5205034  
**LIVE SHIELD VEST AMID M**  
ALL BLACK



AN5205012  
**LIVE SHIELD VEST AMID M**  
RED

### LIVE SHIELD VEST AMID WOMEN



AN5205038  
**LIVE SHIELD VEST AMID W**  
BLACK

### LIVE SHIELD SHORTS



AN5205026  
**LIVE SHIELD SHORTS**  
GREY / BLACK

### JUNIOR



AN5205032  
**LIVE SHIELD AMID JR**  
RED

PRODUCT	ART. NO.	COLOR	SIZES	SAFETY TECHN.	WEIGHT	FABRIC	FIT	EXTRAS	PRICES
<b>LIVE SHIELD VEST AMID M</b>	AN5205034	All Black	S	AMID Body	590g / S	Elastic Air Mesh, 4-Way Stretch Lycra	Ergonomic Slim Fit, Removable and Height Adjustable Belt	Highly Breathable, Ultra Flexible, Washable, Lightweight	
	AN5205012	Red	M L XL						
<b>LIVE SHIELD VEST AMID W</b>	AN5205038	Black	XS S M L	AMID Body	520g / S	Elastic Air Mesh, 4-Way Stretch Lycra	Ergonomic Slim Fit, Removable and Height Adjustable Belt	Highly Breathable, Ultra Flexible, Washable, Lightweight	
<b>LIVE SHIELD SHORTS</b>	AN5205026	Grey / Black	XXS XS S M L	Multi-density 3-Layer Foam, Removable Coccyx Pads	390g / S	Elastic Air Mesh, 4-Way Stretch Lycra	Active Thermo Fit	Breathable, Flexible, Washable, Ultra Lightweight	
<b>LIVE SHIELD AMID JR</b>	AN5205032	Red	S M L	AMID Body	520g / S	Elastic Air Mesh, 4-Way Stretch Lycra	Ergonomic Slim Fit, Removable and Height Adjustable Belt	Highly Breathable, Ultra Flexible, Washable, Lightweight	

## BAGS AND PACKS TECHNICAL SPECIFICATIONS

### TECHNICAL



AL5045710  
**LAPTOP PACK**  
BLACK



AL5045720  
**LAPTOP PACK**  
BLACK DARK RED



AL5045810  
**TRAVEL PACK**  
BLACK



AL5047820  
**DUFFLE BAG 40L**  
BLACK



AL5047920  
**DUFFLE BAG 60L**  
BLACK



AL5047520  
**CABIN TROLLEY**  
BLACK / BLACK



AL5047420  
**TROLLEY 90L**  
BLACK / BLACK



AL5047410  
**TROLLEY 90L**  
RED / RIO RED



AL5047310  
**RS TRUNK 130L**  
RED / RIO RED

PRODUCT	ART. NO.	COLOR	VOL.	DIMENSIONS H x L x W	WEIGHT	FABRIC	CONSTRUCTION	FEATURES	PRICES
<b>LAPTOP PACK</b>	AL5045710	Black	20l	51x30x16cm	1300g	600D PE with PU Coating, 420D PE with PU Coating, 150D PE with PU*2 Coating, PVC free, Water- and Stain-resistant	Internal Document Sleeve, 17" Padded Laptop Compartment, Easy-Access Main Compartment, Internal Zippered Mesh Pockets, Top Handle, Adjustable Shoulder Straps, Main Compartment with Organizers, Padded Shoulder Straps, Fully Padded	365 Days Usage, Slim Design, EVA-Molded Back Panels	
	AL5045720	Dark red							
<b>TRAVEL PACK</b>	AL5045810	Black	30l	53,5x34x20cm	1300g	600D PE with PU Coating, 420D PE with PU Coating, 150D PE with PU*2 Coating, PVC free, Water- and Stain-resistant	Detachable Office Organizer, Separate Sneakers Bag, 17" Padded Laptop Compartment, Easy-Access Main Compartment, Chest Strap, Top Handle, Adjustable Shoulder Straps, Main Compartment with Organizers, Padded Shoulder Straps, Fully Padded, Internal Pocket	365 Days Usage, Slim Design, Side Water Bottle Pocket, EVA-Molded Back Panels	
<b>DUFFLE BAG 40L</b>	AL5047820	Black	40l	50x35x22cm	700g	150D PE with PU*2 Coating, 420D PA with TPU Coating, PVC free, Water- and Stain-resistant	Easy-Access Main Compartment, Sneakers Compartment, Internal Zippered Mesh Pockets, Top Handle, Side Handle, Pocket for Shoulder Strap, Backpack Carry Option, Padded Shoulder Straps, Main Compartment	Lightweight, Durable, 365 Days Usage	
<b>DUFFLE BAG 60L</b>	AL5047920	Black	60l	56x40x27cm	880g	150D PE with PU*2 Coating, 420D PA with TPU Coating, PVC free, Water- and Stain-resistant	Easy-Access Main Compartment, Sneakers Compartment, Internal Zippered Mesh Pockets, Top Handle, Side Handle, Pocket for Shoulder Strap, Backpack Carry Option, Padded Shoulder Straps, Main Compartment	Lightweight, Durable, 365 Days Usage	
<b>CABIN TROLLEY</b>	AL5047520	Black / Black	40l	52x33x20cm	2200g	600D PE with PU Coating, 500D PE with PU Coating, 150D PE with PU*2 Coating, PVC free, Water- and Stain-resistant	Internal Document Sleeve, Easy-Access Main Compartment, Retractable Top Handle, Mesh Pocket Inside Lid (Laptop Compatible), Cushioned Handles, Front Accessory Pocket	Durable, 365 Days Usage, Name Card Template, Silent Big Wheels (8.5 cm)	
<b>TROLLEY 90L</b>	AL5047420	Black / Black	90l	74x40x29cm	4000g	600D PE with PU Coating, 500D PE with PU Coating, 150D PE with PU*2 Coating, PVC free, Water- and Stain-resistant	Easy-Access Main Compartment, Retractable Top Handle, Cushioned Handles, Front Accessory Pocket, Internal Pockets	Durable, 365 Days Usage, Name Card Template, Silent Big Wheels (8.5 cm)	
	AL5047410	Red / Rio Red							
<b>RS TRUNK 130L</b>	AL5047310	Red / Rio Red	130l	98x45x35cm	4700g	Tarpaulin Lining, 600D PE with PU Coating, 500D PE with PU Coating, 150D PE with PU*2 Coating, PVC free, Water- and Stain-resistant	Easy-Access Main Compartment, Retractable Top Handle, Cushioned Handles, Front Accessory Pocket, Internal Pockets	Durable, 365 Days Usage, Easy Cleaning Tarpaulin Lining, Name Tag Print, Silent Big Wheels (8.5 cm), 2-Pair-Boot Compartment	

## BAGS AND PACKS TECHNICAL SPECIFICATIONS



AL5053410  
**BOOT & HELMET  
PACK NEW**  
RED



AL5053420  
**BOOT & HELMET  
PACK NEW**  
BLACK



AL5053440  
**BOOT & HELMET  
PACK NEW**  
PINK



AL5050310  
**RS PACK 30L**  
RED / RIO RED



AL5045420  
**RS PACK 50L**  
RED / RIO RED



AL5045320  
**RS PACK 90L**  
RED / RIO RED



AL5047620  
**RS DOUBLE SKI WHEELIE**  
BLACK / BLACK



AL5047610  
**RS DOUBLE SKI WHEELIE**  
RED / RIO RED



AL5047210  
**RS HEATED BOOT  
PACK 230V**  
RED / RIO RED



AL5053920  
**TRAVEL WASH BAG NEW**  
BLACK



AL5053910  
**TRAVEL WASH BAG NEW**  
RED



AL5046410  
**RS GOGGLE CASE  
2 PAIRS**  
BLACK



AL5049110  
**RS SKI FIX 10 PCS**  
BLACK / BLACK



AL5049210  
**ECO SKI FIX 10 PCS**  
BLACK / RED



AL5034720  
**REDSTER FIS SKI BAG**  
BLACK



AL5050610  
**RS SKI WHEELIE 4 PAIRS +**  
RED / RIO RED

PRODUCT	ART. NO.	COLOR	VOL.	DIMENSIONS H x L x W	WEIGHT	FABRIC	CONSTRUCTION	FEATURES	PRICES
<b>BOOT &amp; HELMET PACK</b>	AL5053410	Red	35L	46x35x23,5cm	610g	Water/Stain Resistant Fabric, Water/Stain Resistant Coating	Main Compartment for Boots & Helmet, Padded Shoulder Straps, Ventilation Grid, Padded Back Panel, Internal Accessory Pocket	Name Tag Print	
	AL5053420	Black							
	AL5053440	Pink							
<b>RS PACK 30L</b>	AL5050310	Red / Rio Red	30L	50x30x24cm	1100g	Tarpaulin Lining, 600D PE with PU Coating, 500D PE with PU Coating, 150D PE with PU*2 Coating, PVC free, Water- and Stain-resistant	Tangle-free, Easy-Access Main Compartment, Chest Strap, Internal Zippered Mesh Pockets, Integrated Handle, Adjustable Hip Belt, Padded Shoulder Straps, Boot Fixation Cover, Boot Fixation Station, Ventilation Grid, Main Compartment	Durable, Easy Cleaning Tarpaulin Lining, Name Tag Print	
<b>RS PACK 50L</b>	AL5045420	Red / Rio Red	50L	58x34x26cm	1250g	Tarpaulin Lining, 600D PE with PU Coating, 500D PE with PU Coating, 150D PE with PU*2 Coating, PVC free, Water- and Stain-resistant	Main Compartment for Boots & Helmet, Easy-Access Main Compartment, Chest Strap, Handle with Ventilation Grid, Adjustable Hip Belt, Adjustable Shoulder Straps, Padded Shoulder Straps, Fully Padded, Internal Zippered Pocket	Durable, Easy Cleaning Tarpaulin Lining, Name Tag Print	
<b>RS PACK 90L</b>	AL5045320	Red / Rio Red	90L	70x47x38cm	1600g	Tarpaulin Lining, 600D PE with PU Coating, 500D PE with PU Coating, 150D PE with PU*2 Coating, PVC free, Water- and Stain-resistant	Main Compartment for Boots & Helmet, Separate Ski Boot Bag, Easy-Access Main Compartment, Chest Strap, Top Handle, Handle with Ventilation Grid, Adjustable Hip Belt, Adjustable Shoulder Straps, Padded Shoulder Straps, Fully Padded, Internal Zippered Pocket	Durable, Easy Cleaning Tarpaulin Lining, Name Tag Print	
<b>RS HEATED BOOT PACK 230V</b>	AL5047210	Red / Rio Red	70L	60x45x35cm	2300g	Tarpaulin Lining, 600D PE with PU Coating, 500D PE with PU Coating, 150D PE with PU*2 Coating, PVC free, Water- and Stain-resistant	Main Compartment for Boots & Helmet, Easy-Access Main Compartment, Chest Strap, Handle with Ventilation Grid, Adjustable Hip Belt, Padded Shoulder Straps, Padded Back Panel, Padded Handles, External Pockets, Internal Zippered Pocket	Easy Cleaning Tarpaulin Lining, Integrated Step-On Mat, Name Tag Print, Temperature Setting Hi/Med/Low, DC and Car Cable Plug-In, 12V/DC/45W.220V/AC/100W - CE-HA0116091007E	
<b>TRAVEL WASH BAG</b>	AL5053910	Red	38x24cm		140g	Lite Ripstop PA with TPU Coating	Multiple Organizational Pockets	365 Days Usage, Secure Hanging Hook, Made From Leftover Fabrics, Small Compressible	
	AL5053920	Black							
<b>RS GOGGLE CASE 2 PAIRS</b>	AL5046410	Black	3L	22x19x15cm	400g	600D PE with PU Coating, 150D PE with PU*2 Coating, 600D Poly with PU Coating, PVC free, Water- and Stain-resistant	Top Handle, Fully Padded	Name Tag Print, Integrated Pocket Mirror	
<b>RS SKI FIX 10 PCS</b>	AL5049110	Black / Black	-	43x5,7x1cm	28g				
<b>ECO SKI FIX 10 PCS</b>	AL5049210	Black / Red	-	45,5x4,5x1cm	7g				
<b>RS DOUBLE SKI WHEELIE</b>	AL5047620	Black / Black	-	217x25x17cm	2700g	Tarpaulin Lining, 600D PE with PU Coating, 500D PE with PU Coating, PVC free, Water- and Stain-resistant	Easy-Access Main Compartment, Helmet and Accessory Pocket, Length Adjustment: Daisy Chain, External Compression Straps, Fully Padded, Adjustable Length, Cushioned Handles	Durable, Easy Cleaning Tarpaulin Lining, Name Tag Print, Silent Big Wheels (8.5 cm)	
	AL5047610	Red / Rio Red							
<b>REDSTER FIS SKI BAG 3 PAIRS</b>	AL5034720	Black	-	185x10x40cm 205x10x40cm 230x10x40cm	3200g	Tarpaulin Lining, 600D PE with PU Coating, 2000D PE with TPE Coating, PVC free	External Compression Straps, Fully Padded	Durable, Name Tag Print	
<b>RS SKI WHEELIE 4 PAIRS +</b>	AL5050610	Red / Rio Red	-	50x45x45cm	5000g	Tarpaulin Lining, 600D PE with PU Coating, 500D PE with PU Coating, PVC free, Water- and Stain-resistant	Top Handle, Length Adjustment: Daisy Chain, Side Handles, External Compression Straps, Fully Padded, Cushioned Handles, Ski Length Adjuster, Internal Zippered Pocket	Easy Cleaning Tarpaulin Lining, Name Tag Print, Silent Big Wheels (8.5 cm)	

# APPAREL

## ESSENTIALS



AP5109510  
**RS RAIN COAT**  
RED



AP5120130  
**RS HOODIE NEW**  
MAROON



AP5120140  
**RS HOODIE NEW**  
DARK GREEN / ANTHRACITE



AP5119930  
**RS SWEAT PANT NEW**  
ANTHRACITE



AP5122810  
**ALPS JACKET NEW**  
DARK GREEN



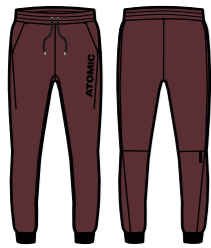
AP5122820  
**ALPS JACKET NEW**  
MAROON / RED



AP5122830  
**ALPS JACKET NEW**  
ANTHRACITE



AP5124210  
**ALPS FZ HOODIE W NEW**  
BLACK



AP5119920  
**RS SWEAT PANT**  
MAROON



AP5112940  
**RS T-SHIRT NEW**  
RUST



AP5112930  
**RS T-SHIRT NEW**  
ANTHRACITE



AP5112910  
**RS T-SHIRT**  
RED



AP5124220  
**ALPS FZ HOODIE W NEW**  
BEIGE



AP5124230  
**ALPS FZ HOODIE W NEW**  
GRANITE GREEN



AP5113940  
**ALPS LS T-SHIRT NEW**  
DARK GREEN



AP5113910  
**ALPS LS T-SHIRT**  
BLACK



AP5120030  
**RS KIDS HOODIE NEW**  
MAROON



AP5120040  
**RS KIDS HOODIE NEW**  
DARK GREEN / ANTHRACITE



AP5113610  
**RS KIDS T-SHIRT**  
RED



AP5113620  
**RS KIDS T-SHIRT NEW**  
ANTHRACITE



AP5113850  
**ALPS T-SHIRT M NEW**  
BLACK



AP5113870  
**ALPS T-SHIRT M NEW**  
MAROON



AP5113880  
**ALPS T-SHIRT M**  
RUST



AP5113890  
**ALPS T-SHIRT M**  
GULL GREY



AP5113630  
**RS KIDS T-SHIRT NEW**  
RUST



AP51122910  
**ALPS FZ HOODIE M NEW**  
DARK BLUE



AP51122920  
**ALPS FZ HOODIE M NEW**  
RUST



AP51122930  
**ALPS FZ HOODIE NEW**  
GRANITE GREEN



AP5123810  
**ALPS T-SHIRT W NEW**  
BLACK



AP5123820  
**ALPS T-SHIRT W NEW**  
WHITE



AP5123830  
**ALPS T-SHIRT W NEW**  
GRANITE GREEN



AP5123840  
**ALPS T-SHIRT W NEW**  
BEIGE

APPAREL

ESSENTIALS



AP5123010  
**POCKET T-SHIRT NEW**  
ANTHRACITE



AP5123020  
**POCKET T-SHIRT NEW**  
GRANITE GREEN



AP5123030  
**POCKET T-SHIRT NEW**  
OFF WHITE / EMBROIDERY



AP5123040  
**POCKET T-SHIRT NEW**  
ANTHRACITE / EMBROIDERY



AP5107960  
**ATOMIC SWEATER M NEW**  
BEIGE



AP5107950  
**ATOMIC SWEATER M NEW**  
STONE GREY



AP5107940  
**ATOMIC SWEATER M NEW**  
BLACK



AP5107640  
**ATOMIC SWEATER W NEW**  
BEIGE



AP5107650  
**ATOMIC SWEATER W NEW**  
OFF WHITE



AP5107660  
**ATOMIC SWEATER W NEW**  
BLACK



AP5123710  
**ALPS VEST M NEW**  
BLACK



AP5123720  
**ALPS VEST M NEW**  
RED / MAROON



AP5124020  
**ALPS VEST W NEW**  
BEIGE



AP5124010  
**ALPS VEST W NEW**  
BLACK



AL5109260  
**RACING BEANIE NEW**  
ANTHRACITE / RUST /  
DARK GREEN



AL5109230  
**RACING BEANIE**  
CARROT / RED / MAROON



AL5108580  
**ALPS KIDS BEANIE NEW**  
DEEP PURPLE /  
LAVENDER / VIOLET



AL5108570  
**ALPS KIDS BEANIE NEW**  
ANTHRACITE / RUST /  
DARK GREEN



AL5115490  
**ALPS BEANIE NEW**  
BLACK



AL5115470  
**ALPS BEANIE NEW**  
MAROON



AL5115480  
**ALPS BEANIE NEW**  
DARK GREEN



AL5115460  
**ALPS BEANIE**  
GREY



AL5035280  
**ALPS ROLLED CUFF  
BEANIE NEW**  
DARK BLUE



AL5035250  
**ALPS ROLLED CUFF  
BEANIE NEW**  
BROWN



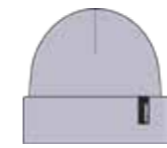
AL5035210  
**ALPS ROLLED CUFF  
BEANIE NEW**  
BLACK



AL5035270  
**ALPS ROLLED CUFF  
BEANIE NEW**  
MAROON



AL5124740  
**ALPS KIDS ROLLED  
CUFF BEANIE NEW**  
RUST



AL5124720  
**ALPS KIDS ROLLED  
CUFF BEANIE NEW**  
LAVENDER



AL5124730  
**ALPS KIDS ROLLED  
CUFF BEANIE NEW**  
STONE GREY



AL5115380  
**ALPS HEADBAND NEW**  
BEIGE



AL5115390  
**ALPS HEADBAND NEW**  
RUST



AL5115350  
**ALPS HEADBAND**  
GREY



AL5115370  
**ALPS HEADBAND**  
LAVENDER



AL5124310  
**RACING CAP NEW**  
MAROON



AL5124320  
**RACING CAP NEW**  
BLACK



AL5124330  
**RACING CAP NEW**  
STONE GREY



AL5124340  
**RACING CAP NEW**  
DARK GREEN



AL5124420  
**ALPS  
TRUCKER CAP NEW**  
STONE GREY



AL5124430  
**ALPS  
TRUCKER CAP NEW**  
DARK GREEN



AL5124410  
**ALPS  
TRUCKER CAP NEW**  
BEIGE



AL5125820  
**ALPS  
NECKWARMER NEW**  
DARK BLUE



AL5125830  
**ALPS  
NECKWARMER NEW**  
PINK



AL5125810  
**ALPS  
NECKWARMER NEW**  
BLACK

**FIS RULES 2024/25 (EQUIPMENT RULES)**

DISCIPLINE	GENDER	SKI LENGTH (MINIMUM) SKI LENGTH MEASUREMENT TOLERANCE OF +/- 1 CM	RADIUS (MINIMUM)	PROFILE WIDTH UNDER BINDING	PROFILE WIDTH IN FRONT OF BINDING	MAXIMUM STAND HEIGHT (SKI/PLATE/BINDING)
<b>WC / EC / COC / FIS MEN AND WOMEN</b>						
DH	MEN	218 cm**	50 m***	<= 65 mm	<= 95 mm	50 mm
DH	WOMEN	210 cm**	50 m***	<= 65 mm	<= 95 mm	50 mm
SG	MEN	210 cm**	45 m	<= 65 mm	<= 95 mm	50 mm
SG	WOMEN	205 cm**	40 m	<= 65 mm	<= 95 mm	50 mm
GS	MEN	193 cm**	30 m	<= 65 mm	<= 103 mm	50 mm
GS	WOMEN	188 cm**	30 m	<= 65 mm	<= 103 mm	50 mm
SL	MEN	165 cm*		>= 63 mm		50 mm
SL	WOMEN	155 cm		>= 63 mm		50 mm
** – 5 cm tolerance for FIS and ENL / * – 10 cm tolerance for men U18 (Junior I) / *** Radius measurement for DH skis with a preparation tolerance of – 1 m						
<b>U 14 (K1) + U 16 (K2)</b>						
SG	U14 MEN / WOMEN			<= 65 mm		50 mm
SG	U16 MEN / WOMEN	>= 183 cm	30 m	<= 65 mm		50 mm
GS	U14 MEN / WOMEN	<= 188 cm	17 m	<= 65 mm		50 mm
GS	U16 MEN / WOMEN	<= 188 cm	17 m	<= 65 mm		50 mm
SL	U14 MEN / WOMEN	>= 130 cm				50 mm
SL	U16 MEN / WOMEN	>= 130 cm				50 mm
>= minimum / <= maximum						
<b>MASTERS</b>						
SG	MEN	185 cm*				50 mm
SG	WOMEN	180 cm*				50 mm
GS skis are allowed!						
GS	MEN	185 cm**				50 mm
GS	WOMEN	180 cm**				50 mm
SL	MEN					50 mm
SL	WOMEN					50 mm
* no tolerance / ** – 5cm tolerance						

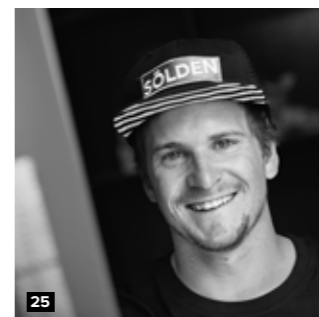
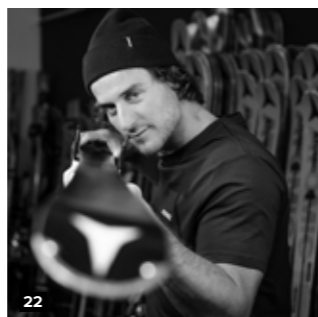
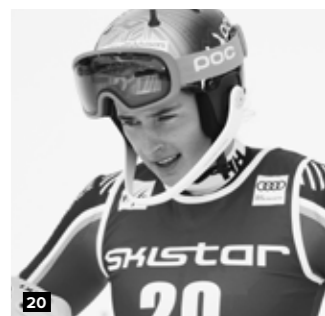
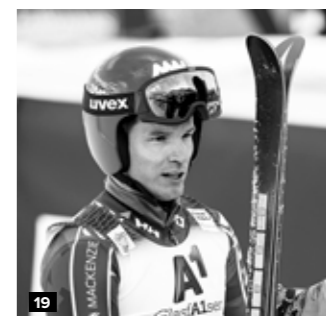
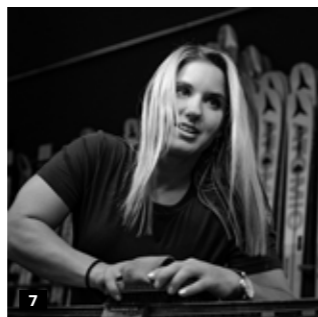
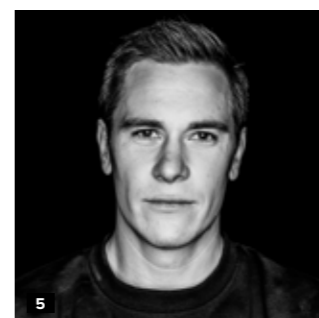
For masters athletes the ski length is a recommendation (except SG)! No restrictions regarding length, width and radius for women above 55 and men above 65!  
**The FIS recommendations and rules for ski length, radius and profile width can be found in the current FIS Specifications for Competition Equipment! (www.fis-ski.com)**

**REDSTER FIS USER RECOMMENDATIONS 2024 (SKI, BINDING, BOOT)**

Ski selection of FIS products, both length and model, will be always very individual and a subjective decision. We noticed some common trends and following chart should help you to make the right decisions. The optimal skis FIS model and length is determined by the ability, the weight and also the strength of the user.

AGE	WEIGHT (kg)	WEIGHT (lbs)	SLALOM	LENGTH (cm)	BINDING	GIANT SLALOM	LENGTH (cm)	BINDING	BOOT
<b>U8 AGES 6 – 7</b>	18 – 23	40 – 50	REDSTER J9 FIS J-RP <sup>2</sup>	110	COLT 7	REDSTER J9 FIS J-RP <sup>2</sup> REDSTER G9 FIS J-RP <sup>2</sup>	110 / 124	COLT 7	JR 40
	23 – 27	50 – 60	REDSTER S9 FIS J-RP <sup>3</sup>	124	COLT 7	REDSTER G9 FIS J-RP <sup>3</sup>	124 / 131	COLT 7	JR 40 JR 60 RS
	27 – 32	60 – 70	REDSTER S9 FIS J-RP <sup>3</sup>	124	COLT 7	REDSTER G9 FIS J-RP <sup>3</sup>	124 / 131	COLT 7	JR 60 RS
<b>U10 AGES 8 – 9</b>	32 – 36	70 – 80	REDSTER S9 FIS J-RP <sup>3</sup>	124 / 131	COLT 7	REDSTER G9 FIS J-RP <sup>3</sup>	131 / 138	COLT 7 ICON 10	JR 40
	36 – 41	80 – 90	REDSTER S9 FIS J-RP <sup>3</sup>	131 / 138	COLT 7 ICON 10	REDSTER G9 FIS J-RP <sup>3</sup>	138 / 145	ICON 10	JR 40 JR 60 RS
	41 – 45	90 – 100	REDSTER S9 FIS J-RP <sup>2</sup>	138 / 145	ICON 10	REDSTER G9 FIS J-RP <sup>3</sup>	145 / 152	ICON 10	JR 60 RS
<b>U12 AGES 10 – 11</b>	32 – 36	70 – 80	REDSTER S9 FIS J-RP <sup>3</sup>	131	COLT 7 ICON 10	REDSTER G9 FIS J-RP <sup>3</sup>	131 / 138	ICON 10	JR 60 RS
	36 – 41	80 – 90	REDSTER S9 FIS J-RP <sup>3</sup>	131 / 138	COLT 7 ICON 10	REDSTER G9 FIS J-RP <sup>3</sup>	138 / 145	ICON 10	STI 70
	41 – 45	90 – 100	REDSTER S9 FIS J-RP <sup>2</sup>	138 / 145	ICON 10	REDSTER G9 FIS REVO J-RP <sup>3</sup> REDSTER G9 FIS REVO	145 / 152	ICON 10 ICON 12	STI 70
	45 – 50	100 – 110	REDSTER S9 FIS J-RP <sup>2</sup>	145 / 152	ICON 10 ICON 12	REDSTER G9 FIS REVO J-RP <sup>3</sup> REDSTER G9 REVO	159 / 166	ICON 10 ICON 12	STI 90
	50 – 54	110 – 120	REDSTER S9 FIS	145 / 152	ICON 10 ICON 12	REDSTER G9 FIS REVO J-RP <sup>3</sup> REDSTER G9 REVO	159 / 166	ICON 10 ICON 12	STI 110
<b>U14 AGES 12 – 13</b>	32 – 36	70 – 80	REDSTER S9 FIS J-RP <sup>3</sup>	131	COLT 7 ICON 10	REDSTER G9 FIS J-RP <sup>3</sup>	131 / 138	ICON 10	STI 70
	36 – 41	80 – 90	REDSTER S9 FIS J-RP <sup>3</sup>	131 / 138	COLT 7 ICON 10	REDSTER G9 FIS J-RP <sup>3</sup>	138 / 145	ICON 10	STI 70
	41 – 45	90 – 100	REDSTER S9 FIS J-RP <sup>2</sup>	138 / 145	ICON 10	REDSTER G9 FIS J-RP <sup>3</sup> REDSTER G9 REVO	145 / 152	ICON 10 ICON 12	STI 70
	45 – 50	100 – 110	REDSTER S9 FIS J-RP <sup>2</sup>	145 / 152	ICON 10 ICON 12	REDSTER G9 FIS J-RP <sup>3</sup> REDSTER G9 REVO	152 / 159	ICON 10 ICON 12	STI 90
	50 – 54	110 – 120	REDSTER S9 FIS J-RP <sup>3</sup> REDSTER S9 FIS	145 / 152	ICON 10 ICON 12	REDSTER G9 FIS J-R <sup>2</sup> REDSTER G9 REVO	159 / 166	ICON 10 ICON 12	STI 90
<b>U16 AGES 14 – 15</b>	54 +	120 +	REDSTER S9 FIS	152	ICON 12	REDSTER G9 FIS J-R <sup>2</sup> REDSTER G9 REVO	166	ICON 12	STI 110
	41 – 45	90 – 100	REDSTER S9 FIS J-RP <sup>3</sup> REDSTER S9 FIS	138 / 145	ICON 10 ICON 12	REDSTER G9 FIS J-RP <sup>2</sup> REDSTER G9 REVOSHOCK J	152 / 159	ICON 10 ICON 12	STI 70
	45 – 50	100 – 110	REDSTER S9 FIS J-RP <sup>3</sup> REDSTER S9 FIS	145 / 152	ICON 10 ICON 12	REDSTER G9 FIS J-RP <sup>2</sup> REDSTER G9 REVOSHOCK J	159 / 166	ICON 12	STI 70 STI 90
	50 – 54	110 – 120	REDSTER S9 FIS	152 / 155	ICON 12 ICON RS 12	REDSTER G9 FIS J-RP <sup>2</sup> REDSTER G9 REVOSHOCK J	166	ICON 12	STI 110 TI 110
	54 – 59	120 – 130	REDSTER S9 FIS	152 / 155	ICON 12 ICON RS 12	REDSTER G9 FIS REVOSHOCK	173	ICON RS 12	STI 110 TI 110
<b>FIS WOMEN AGES 16 + UP</b>	59 – 68	130 – 150	REDSTER S9 FIS & REDSTER S9 FIS W	155 / 157	ICON RS 12 ICON RS 16	REDSTER G9 FIS REVOSHOCK	173 / 180	ICON RS 12 ICON RS 16	STI 130 TI 130
	68 +	150	REDSTER S9 FIS W	157	ICON RS 16	REDSTER G9 FIS REVOSHOCK	180 / 187	ICON RS 16	STI 130 TI 130
	50 – 54	110 – 120	REDSTER S9 FIS W	157	ICON RS 16	REDSTER G9 FIS REVO W	WC / EC 188, FIS 183	ICON RS 16	STI 110
	54 – 59	120 – 130	REDSTER S9 FIS W	157	ICON RS 16	REDSTER G9 FIS REVO W	WC / EC 188, FIS 183	ICON RS 16	STI 110
	59 – 64	130 – 140	REDSTER S9 FIS W	157	ICON RS 16	REDSTER G9 FIS REVO W	WC / EC 188, FIS 183	ICON RS 16	STI 110 STI 130
<b>FIS MEN AGES 16 + UP</b>	64 – 69	140 – 150	REDSTER S9 FIS W	157	ICON RS 16 ICON 24	REDSTER G9 FIS REVO W	WC / EC 188, FIS 183	ICON RS 16 ICON 24	STI 130
	69 – 73	150 – 160	REDSTER S9 FIS W	157	ICON RS 16 ICON 24	REDSTER G9 FIS REVO W	WC / EC 188, FIS 183	ICON RS 16 ICON 24	STI 130 STI 150
	73 +	160 +	REDSTER S9 FIS W	157	ICON RS 16 ICON 24	REDSTER G9 FIS REVO W	WC / EC 188, FIS 183	ICON RS 16 ICON 24	STI 150
	54 – 59	120 – 130	REDSTER S9 FIS M	165	ICON RS 16	REDSTER G9 FIS REVOSHOCK M REDSTER G9 FIS REVOSHOCK W	WC / EC 193, FIS 188	ICON RS 16	TI 110
	59 – 64	130 – 140	REDSTER S9 FIS M	165	ICON RS 16	REDSTER G9 FIS REVOSHOCK M REDSTER G9 FIS REVOSHOCK W	WC / EC 193, FIS 188	ICON RS 16	TI 110 TI 130
<b>FIS MEN AGES 16 + UP</b>	64 – 69	140 – 150	REDSTER S9 FIS M	165	ICON RS 16 ICON 24	REDSTER G9 FIS REVOSHOCK M REDSTER G9 FIS REVOSHOCK W	WC / EC 193, FIS 188	ICON RS 16 ICON 24	TI 130
	69 – 73	150 – 160	REDSTER S9 FIS M	165	ICON RS 16 ICON 24	REDSTER G9 FIS REVOSHOCK M REDSTER G9 FIS REVOSHOCK W	WC / EC 193, FIS 188	ICON RS 16 ICON 24	TI 150
	73 – 77	160 – 170	REDSTER S9 FIS M	165	ICON RS 16 ICON 24	REDSTER G9 FIS REVOSHOCK M REDSTER G9 FIS REVOSHOCK W	WC / EC 193, FIS 188	ICON RS 16 ICON 24	TI 150
77 +	170 +	REDSTER S9 FIS M	165	ICON RS 16 ICON 24	REDSTER G9 FIS REVOSHOCK M REDSTER G9 FIS REVOSHOCK W	WC / EC 193, FIS 188	ICON RS 16 ICON 24	TI 150 TI 170	

# BORN ON THE RACE COURSE



1 Niels Hintermann 2 Adrian Sejersted 3 Mirjam Puchner 4 Breezy Johnson 5 Filip Zubcic 6 Andreas Sander  
7 Joana Hähler 8 Amelia Smart 9 Sofia Goggia 10 Mina Fürst-Holtmann 11 Alex Vinatzer 12 Blaise Giezendanner  
13 Aleksander Aamodt Kilde 14 Maryna Gasienica-Daniel 15 Mikaela Shiffrin 16 Katharina Gallhuber 17 Manuel Feller  
18 Nadia Delago 19 Erik Read 20 Ali Nullmeyer 21 Florian Schieder 22 Daniel Danklmaier 23 Marco Schwarz  
24 Stephanie Brunner 25 Fabio Gstrein 26 Lucas Braathen

# ATOMIC PRO CENTER

## ATOMIC PRO CENTER ALTENMARKT

Atomic Strasse 1  
5541 Altenmarkt im Pongau  
Austria  
Tel. +43 6452 3900 177  
procenter@atomic.com  
www.atomic.com/en/  
atomicprocenter

## ATOMIC PRO CENTER OSLO

Snofonna 1  
1470 Lørenskog  
Norway  
Tel. +47 919 21 901  
procenter.oslo@atomic.com  
www.atomic.com/en-no/  
atomicprocenter

# ATOMIC PRO CENTER PARTNER

## A U S T R I A

### BRÜNDL SPORTS

Nikolaus-Gassner-Straße 4  
5710 Kaprun  
Austria  
Tel. +43 6547 83880  
office@bruendl.at  
www.bruendl.at

### INSIDER SPORTSHOP TUX

Vorderlanersbach 83  
6293 Tux  
Austria  
Tel. +43 5287 86109  
info@insider-sportshop.com  
www.insider-sportshop.com

### INTERSPORT SCHNEIDER

Wagnergasse 4  
5541 Altenmarkt im Pongau  
Austria  
Tel. +43 6452 5479  
info@intersport-schneider.at  
www.intersportrent.at

### SPORT FACTORY

Widmoosweg 3  
5602 Wagrain  
Austria  
Tel. +43 6413 7365  
info@sport-factory.com  
www.sport-factory.com

### SPORT H & N

Dorf 35a  
6235 Reith im Alpbachtal  
Austria  
Tel. +43 5337 63260  
sport-hun@sport-hun.at  
www.sport-hun.at

## C A N A D A

### SOMMET SAINT-SAUVEUR

350 avenue Saint-Denis  
Saint-Sauveur (Québec)  
Canada  
J0R 1R3  
infos@sommets.com  
Tel. +450-227-4671 or  
1-800-363-2426

### SQUIRE JOHN'S

209896 Highway 26 West  
The Blue Mountains  
ON L9Y 0L1  
Canada  
Tel. +1 705-445-1130  
info@squirejohns.com  
www.squirejohns.com

## G E R M A N Y

### SPORTWELT EGON HIRT

Titiseestraße 28  
79822 Titisee-Neustadt  
Germany  
Tel. +49 7651 92280  
egon.hirt@ski-hirt.de  
www.ski-hirt.de

### SKIHÜTTE-DAS SPORTHAUS

Tiroler Straße 2  
83242 Reit  
Germany  
Tel. +49 8640 7969290  
www.skihuette.net

### SPORT SPEISER GMBH

Sport Speiser GmbH  
Flurstraße 2  
87538 Bolsterlang  
Tel. +49 8326 38058  
info@sport-speiser.de  
www.sport-shop-speiser.de

## I T A L Y

### ROSSINI SPORT

Via Comasina, 7  
20843 Verano Brianza MB  
Italy  
Tel. +39 0362 900912  
info@rossinisport.it  
www.rossinisport.it

### SPITALER SPORTS

Via Pillhof, 47  
39057 Eppan  
BZ  
Italy  
Tel. +39 0471 205104  
www.spitalersports.com

### TECHNOSPORT S.R.L.

Frazione Plan Felinaz, 19  
11020 Plan Felinaz AO  
Italy  
Tel. +39 0165 32829  
technosport.vda@gmail.com  
www.technosport.vda.it

## J A P A N

### DOING AMS

2-2-6-1 Minami-ku, Terabetōri  
Aichi Nagoya, 457-0072  
Japan  
Tel. +81 52-217-9634  
www.ams-doing.com

### KANDAHAR MACHIDA SHOP

5-9-15 Haramachida  
Machida City  
Tokyo 194-0013  
Japan  
Tel. +81 42-732-7877  
www.kandahar.co.jp

### ISHI SPORTS KANDA COMPE SHOP

1-6-1 Jinbouchyo  
Chiyoda-KU  
TOKYO 010-0051  
Japan  
Tel. +81 3-3295-6060  
www.ici-sports.com

### ISHI SPORTS MORIOKA SHOP

Moss Bill 2F 2-8-14 Morioka  
Morioka City  
Iwate 020-0022  
Japan  
Tel. +81 19-626-2122  
www.ici-sports.com

### ISHI SPORTS YODOBASHI UTSUNOMIYA SHOP

8F 1-4-6 Ekimae-dori  
Utsunomiya City  
Tochigi 321-0964  
Japan  
Tel. +81 28-612-8691  
www.ici-sports.com

### TANABE SPORTS

5-4 Sumiyoshi Matsuyamachi  
Chuo-KU  
Osaka City 540-0017  
Japan  
Tel. +81 6-6763-3901  
www.tanabesports.jp

## N E T H E R L A N D S

### DAKA RACE DEPARTMENT

Langestraat 111-115  
3811 AD Amersfoort  
Netherlands  
Tel. +31 6 55 88 4771  
www.daka.nl/race-department

## S L O V E N I A

### KOALA

Ulica Antona Tomšiča 11  
1294 Višnja Gora  
Slovenia  
Tel. +386 41 721 888  
koala@koala.si  
www.koala.si

## S P A I N

### PATRICK SPORT

C.C. Sexta Avenida  
Local A-97/98/99  
Avda. de la Victoria 2,  
28023 El Plantio  
Madrid  
Tel. 91 372 84 92  
info@patrickssport.com

## S W E D E N

### ALPINGARAGET

Birger Jarlsgatan 127  
113 56 Stockholm  
Sweden  
Tel. +46 8 16 50 10  
web@alpingaraget.se  
www.alpingaraget.se

## S W I T Z E R L A N D

### POLLUX SPORT

Rudenz 32  
3860 Meiringen  
Switzerland  
Tel. +41 33 971 43 18  
fahner@pollux-sport.ch  
www.pollux-sport.ch

### SPORT BAUMANN

Weissbadstrasse 4  
9050 Appenzell  
Switzerland  
Tel. +41 71 787 35 45  
info@sportbaumann.ch  
www.sport-baumann.ch

### SPORT SHOP

TIME OUT USTER  
Pfäffikerstrasse 30  
8610 Uster  
Switzerland  
Tel. +41 44 942 06 16  
mail@sportshop-timeout.ch  
www.sportshop-timeout.ch

## VAQUIN SPORTS & LOISIRS

Immeuble Mont-Calme  
1997 Haute-Nendaz  
Switzerland  
Tel. +41 27 565 87 54  
vaquin.sport@gmail.com  
www.atelierduskivaquin.ch

## VIRAGE SPORTS

Rte du téléphérique 5  
3967 Vercorin  
Switzerland  
Tel. +41 27 455 87 00  
info@virage.ch  
www.virage.ch

## U K

### SKI BARTLETT

Uxbridge Rd  
Uxbridge UB10 0NP  
United Kingdom  
Tel. +44 2088480040  
www.skibartlett.com

## SOLUTIONS 4 FEET

7 Market Square  
Bicester OX26 6AA  
United Kingdom  
Tel. +44 1869 244424  
www.solutions4feet.com

## U S A

### A RACERS EDGE

114 east Lincoln Avenue  
Breckenridge  
CO 80424  
USA  
Tel. +1 970-453-7600  
www.aracersedge.com

## MOUNT HOOD ALPINE RACING CENTER

WINTER LOCATION  
6520 HWY 35  
Mt. Hood, OR 97041  
SUMMER LOCATION  
88786 E. Government Camp Loop  
Government Camp, OR 97028  
Tel. +1 541-352-7000  
www.mthoodarc.com

## PIERCE SKATE AND SKI

208 West 98th Street  
Bloomington, MN 55420  
Tel. +952-884-1990  
www.pierceskateandski.com

## RODGERS SKI AND SPORT

5 Railroad Street  
Lincoln  
NH 03251  
USA  
Tel. +1 603-745-8347  
www.rodgersskiandsport.com

ATOMIC Austria GmbH, Atomic Straße 1, 5541 Altenmarkt  
+43 6452 3900-0, info@atomic.com, atomic.com

© ATOMIC Austria GmbH 2023. Technical information, colors and product designs subject to change.  
All rights reserved. Atomic accepts no responsibility for mistakes and printing errors.